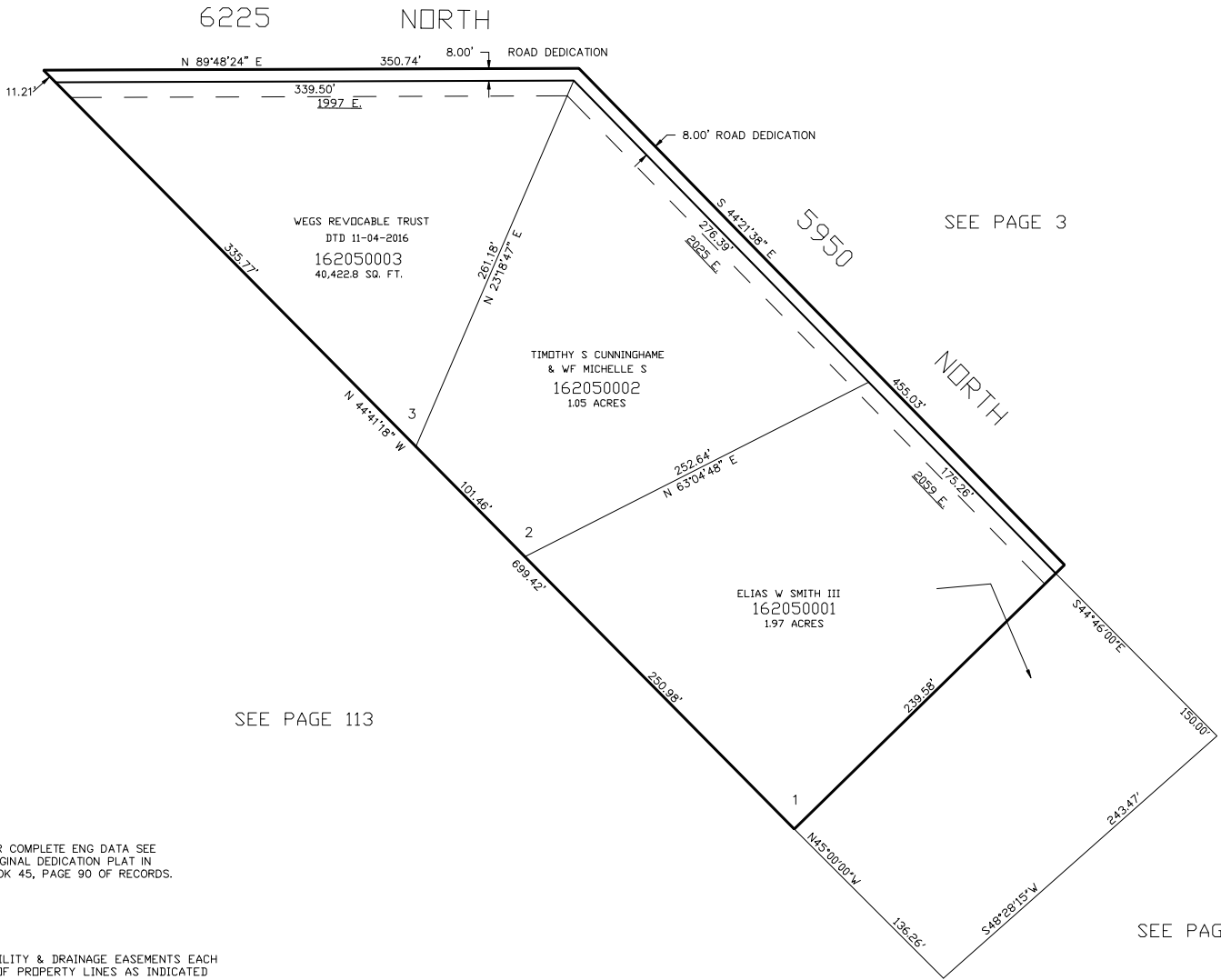


PART OF THE S.E.1/4, OF SEC. 1, T.7N., R.1W., S.L.B. & M.  
LINFORD HILLS SUBDIVISION

WEBER COUNTY  
SCALE 1" = 60'

TAXING UNIT: 36

SEE PAGE 3



\*FOR TAX PURPOSES ONLY\*