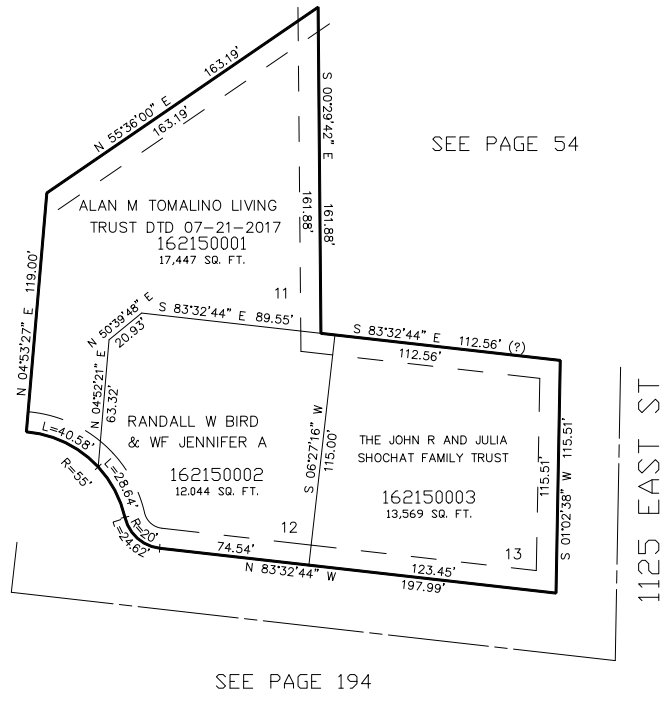


PART OF THE SW 1/4, OF SEC. 27, T.7N., R.1W., S.L.B. & M.
NORTHAMPTON ESTATES PH 1, AMENDED

TAXING UNIT: 10

AMENDMENT TO LOT 11, 12, AND 13
IN NORTH OGDEN CITY
SCALE 1" = 50'

SEE PAGE 194



SEE PAGE 194

10' UTILITY & DRAINAGE EASEMENTS EACH
SIDE OF PROPERTY LINES AS INDICATED
BY DASHED LINES EXCEPT AS OTHERWISE
SHOWN.

FOR COMPLETE ENG DATA SEE
ORIGINAL DEDICATION PLAT IN
BOOK 46, PAGE 79 OF RECORDS.

FOR TAX PURPOSES ONLY