

PART OF THE SE.1/4, OF SECTION 1, T.7N., R.1W., S.L.B. & M.
DAVE WADMAN SUBDIVISION

IN WEBER COUNTY
SCALE 1" = 100'

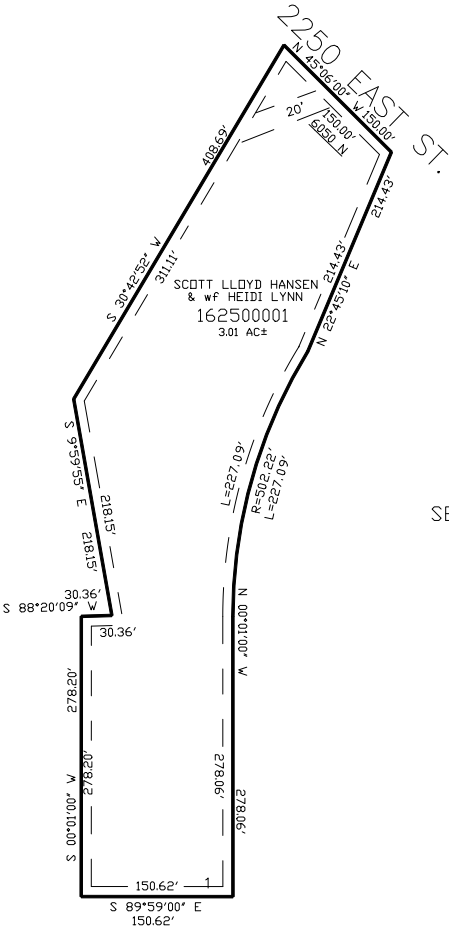
TAXING UNIT: 36

SEE PAGE 3

SEE PAGE 3

SEE PAGE 3

SEE PAGE 3



10' UTILITY & DRAINAGE EASEMENTS EACH
SIDE OF PROPERTY LINES AS INDICATED
BY DASHED LINES EXCEPT AS OTHERWISE
SHOWN.

FOR COMPLETE ENG DATA SEE
ORIGINAL DEDICATION PLAT IN
BOOK 61, PAGE 38 OF RECORDS.

FOR TAX PURPOSES ONLY

KBL 04-2005