

PART OF THE NW.1/4, OF SECTION 19, T.7N., R.1W., S.L.B. & M.
DEER CREST SUBDIVISION PHASE 1

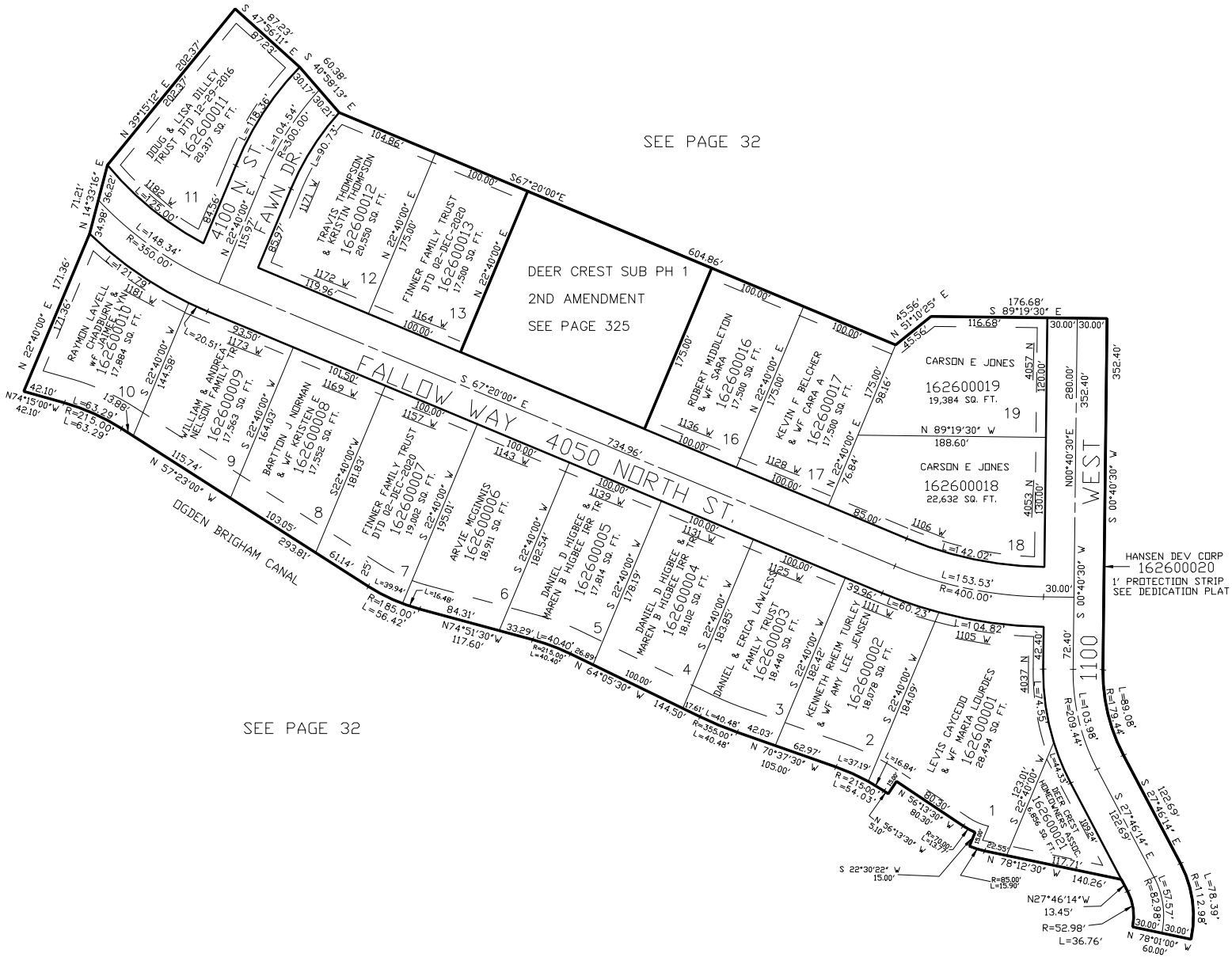
260

IN PLEASANT VIEW CITY

TAXING UNIT: 11

SCALE 1" = 80'

SEE PAGE 32



DEER CREST SUB PH 1
 2ND AMENDMENT
 SEE PAGE 325

SEE PAGE 32

10' UTILITY & DRAINAGE EASEMENTS EACH
 SIDE OF PROPERTY LINES AS INDICATED
 BY DASHED LINES EXCEPT AS OTHERWISE
 SHOWN.

FOR COMPLETE ENG DATA SEE
 ORIGINAL DEDICATION PLAT IN
 BOOK 65, PAGE 1 OF RECORDS.

FOR TAX PURPOSES ONLY