

PART OF THE NW.1/4, OF SECTION 19, T.7N., R.1W., S.L.B. & M.
 PART OF THE NE.1/4, OF SECTION 24, T.7N., R.2W., S.L.B. & M.
DEER CREST SUBDIVISION PHASE 2

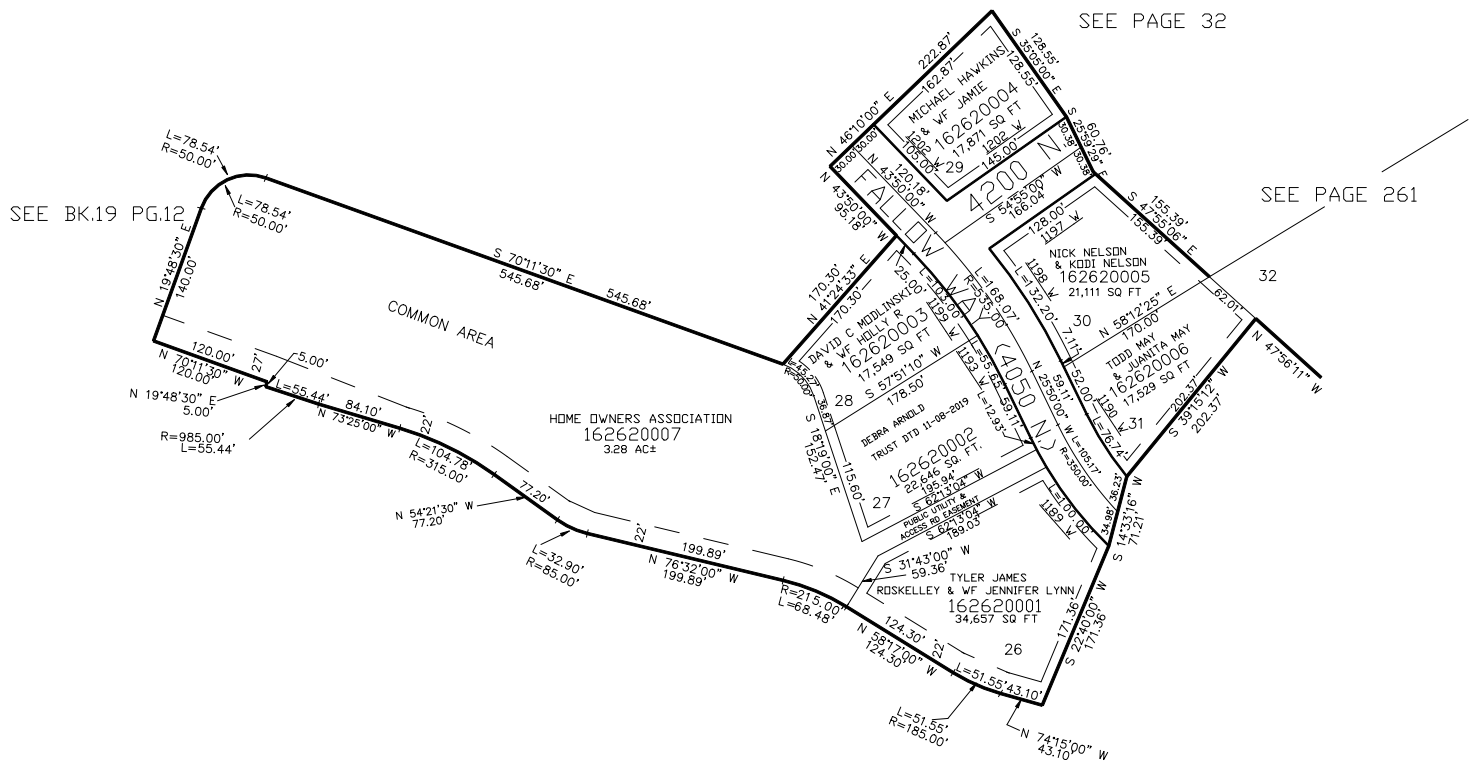
IN PLEASANT VIEW CITY

TAXING UNIT: 11

SCALE 1" = 100'

LOTS 28 TO 31

262



10' UTILITY & DRAINAGE EASEMENTS EACH
 SIDE OF PROPERTY LINES AS INDICATED
 BY DASHED LINES EXCEPT AS OTHERWISE
 SHOWN.

FOR COMPLETE ENG DATA SEE
 ORIGINAL DEDICATION PLAT IN
 BOOK 65, PAGE 2 OF RECORDS.