

PART OF THE NE. 1/4, OF SECTION 21, T.7N., R.1W., S.L.B. & M.
NORTH OGDEN COVE 7TH AMENDMENT

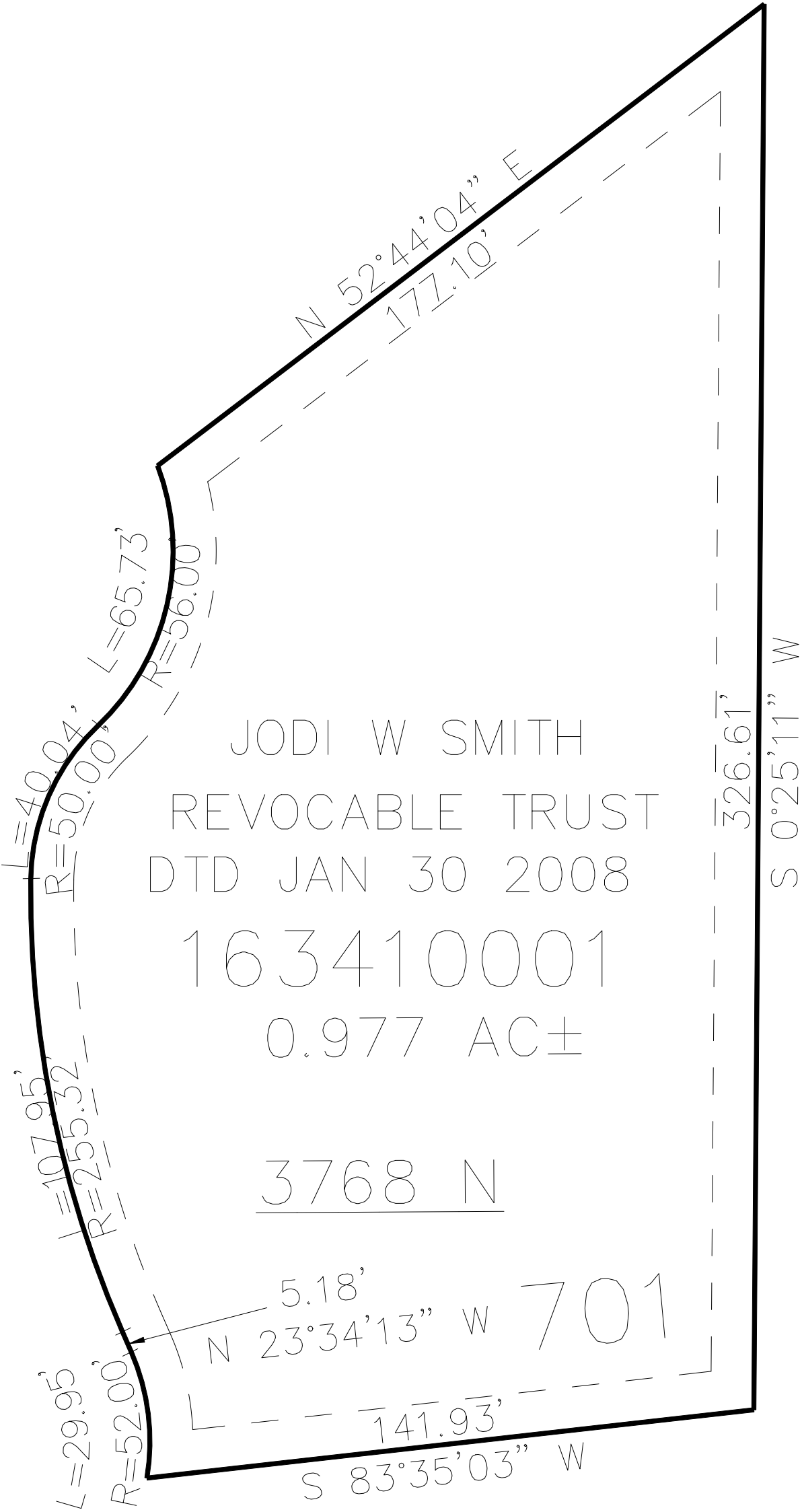
341

TAXING UNIT: 433

IN NORTH OGDEN CITY
SCALE 1" = 30'

SEE PAGE 306

PRIVATE DRIVE



SEE PAGE 306

10' UTILITY & DRAINAGE EASEMENTS EACH
SIDE OF PROPERTY LINES AS INDICATED
BY DASHED LINES EXCEPT AS OTHERWISE
SHOWN.

FOR COMPLETE ENG DATA SEE
ORIGINAL DEDICATION PLAT IN
BOOK 82, PAGE 07 OF RECORDS.

SEE PAGE 306