

PART OF THE N.E. 1/4, OF SEC. 28, T.7N., R.1W., S.L.B. & M.

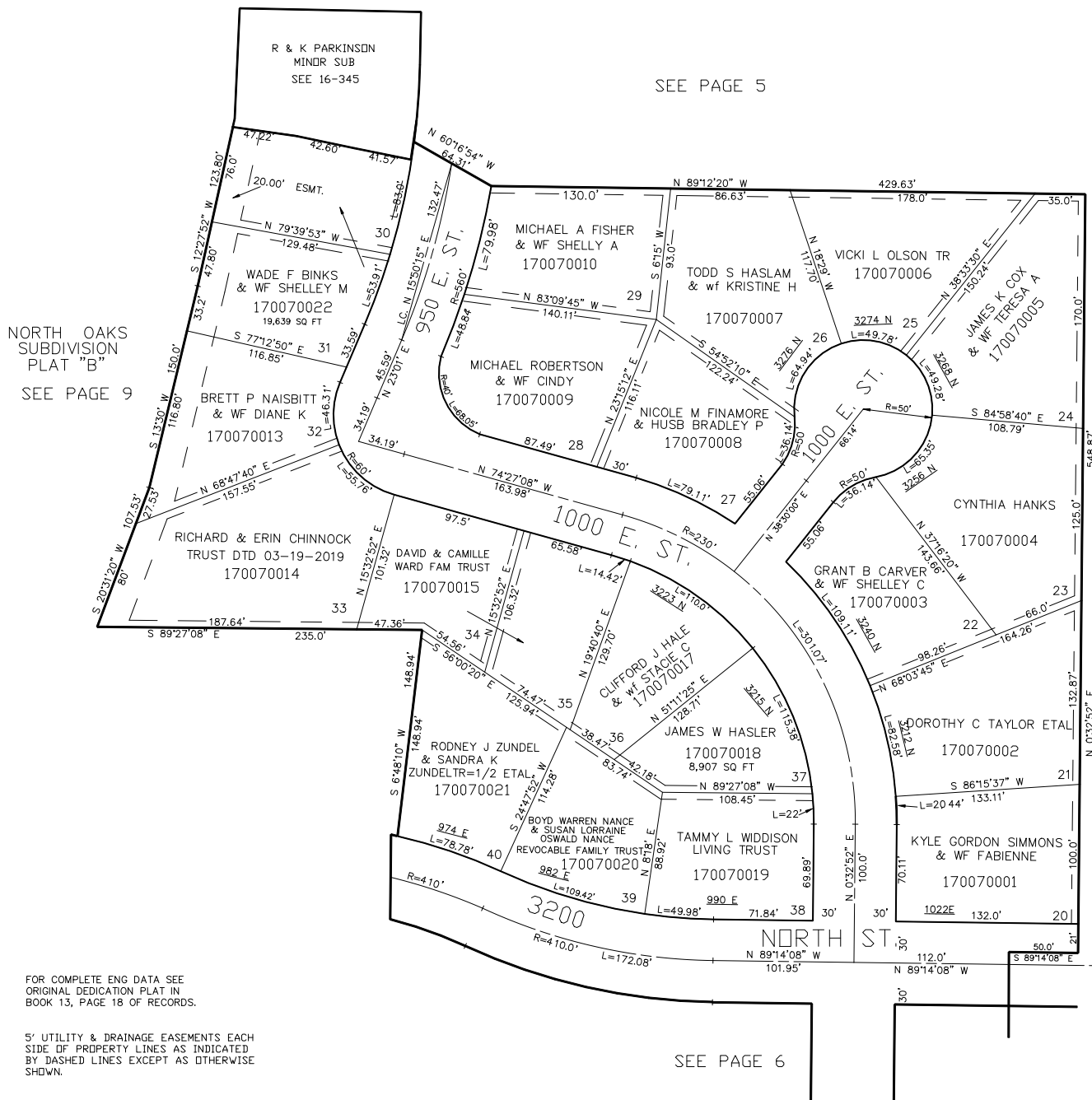
NORTH HEIGHTS SUBDIVISION

LOTS 20 TO 40

IN NORTH OGDEN CITY

SCALE 1" = 60'

TAXING UNIT: 10



FOR COMPLETE ENG DATA SEE ORIGINAL DEDICATION PLAT IN BOOK 13, PAGE 18 OF RECORDS.

5' UTILITY & DRAINAGE EASEMENTS EACH SIDE OF PROPERTY LINES AS INDICATED BY DASHED LINES EXCEPT AS OTHERWISE SHOWN.

SEE PAGE 6

SEE PAGE 5

SEE PAGE 5

NORTH OAKS SUBDIVISION PLAT "B" SEE PAGE 9

FOR TAX PURPOSES ONLY

VLG 7-97