

PART OF THE E. 1/2, OF SEC. 28, T.7N., R.1W., S.L.B. & M.

12

NORTHRIDGE SUBDIVISION NO.1

LOTS 1 TO 11

TAXING UNIT: 10

IN NORTH OGDEN CITY

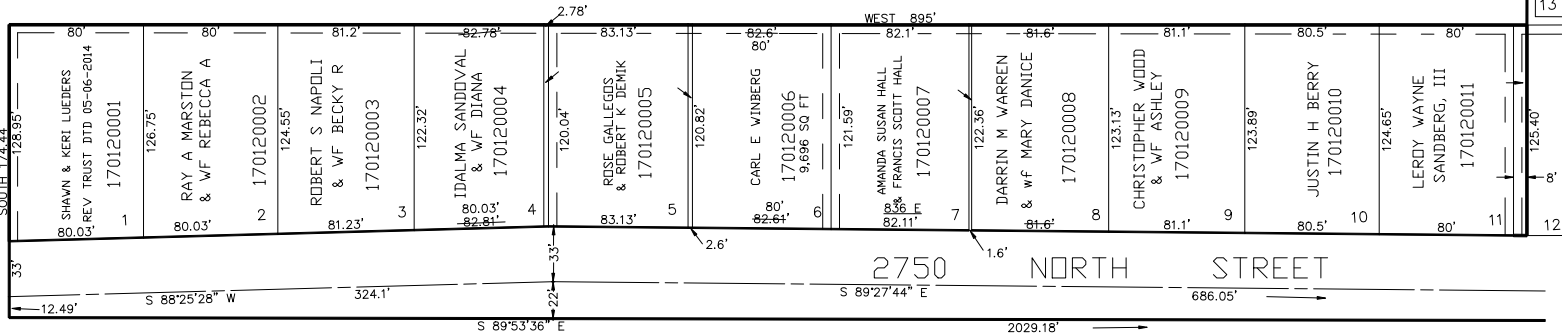
SCALE 1" = 60'

SEE PAGE 98

SEE PAGE 97

SEE PAGE 111

SEE PAGE 13



SEE PAGE 19

FOR COMPLETE ENG DATA SEE  
ORIGINAL DEDICATION PLAT IN  
BOOK 13, PAGE 9 OF RECORDS.

5' UTILITY & DRAINAGE EASEMENTS EACH  
SIDE OF PROPERTY LINES AS INDICATED  
BY DASHED LINES EXCEPT AS OTHERWISE  
SHOWN.