

PART OF THE N.W. 1/4, OF SECTION 28, T.7N., R.1W., S.L.B. & M.

30

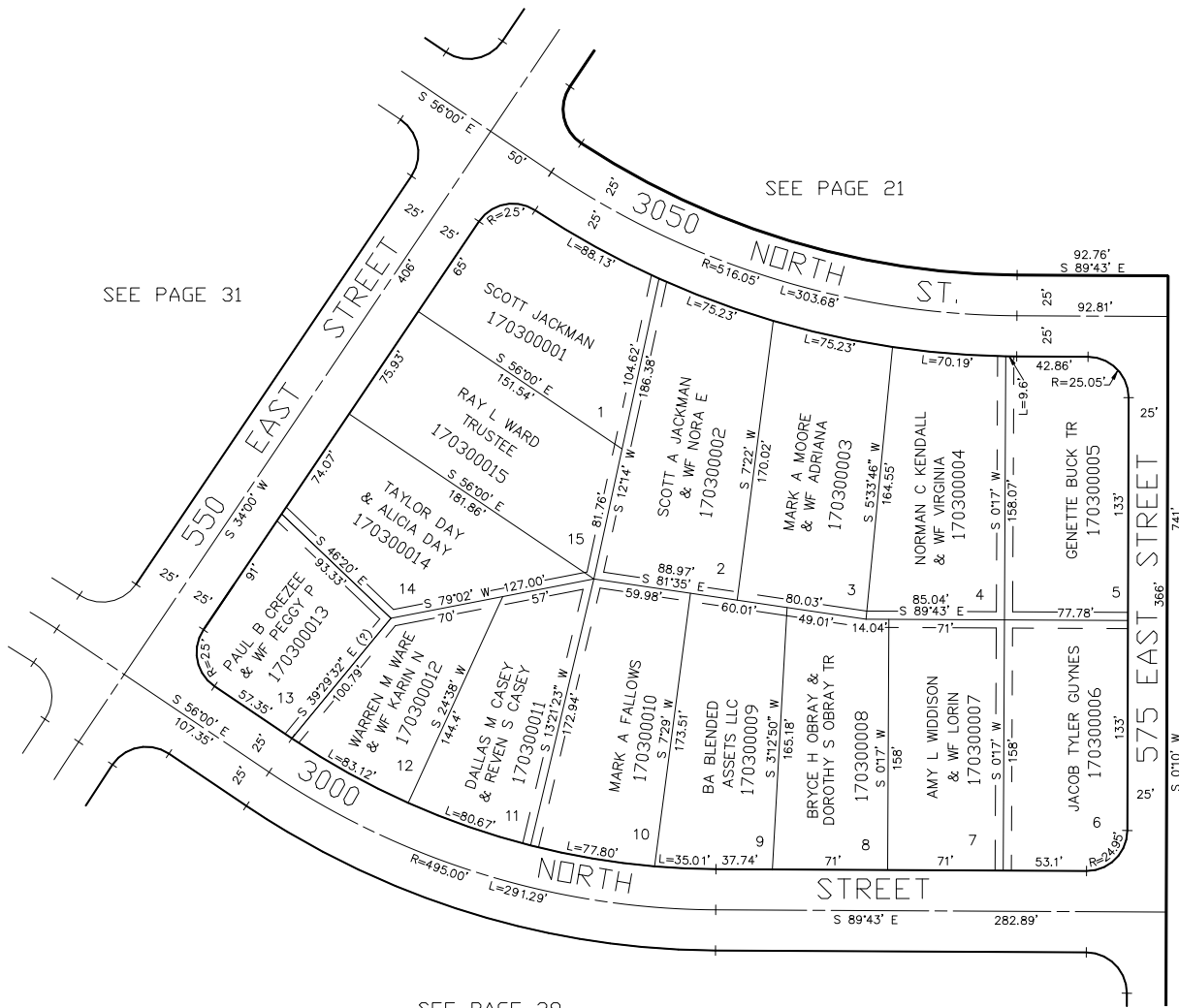
# LOMOND ACRES SUBDIVISION

BLOCK 3

TAXING UNIT: 10

IN NORTH OGDEN CITY

SCALE 1" = 60'



SEE PAGE 20

FOR COMPLETE ENG DATA SEE  
ORIGINAL DEDICATION PLAT IN  
BOOK 9, PAGE 101 OF RECORDS.

5' UTILITY & DRAINAGE EASEMENTS EACH  
SIDE OF PROPERTY LINES AS INDICATED  
BY DASHED LINES EXCEPT AS OTHERWISE  
SHOWN.

\*FOR TAX PURPOSES ONLY\*

PW 7-97