

PART OF THE N.W. 1/4, OF SECTION 28, T.7N., R.1W., S.L.B. & M.

LOMOND ACRES SUBDIVISION

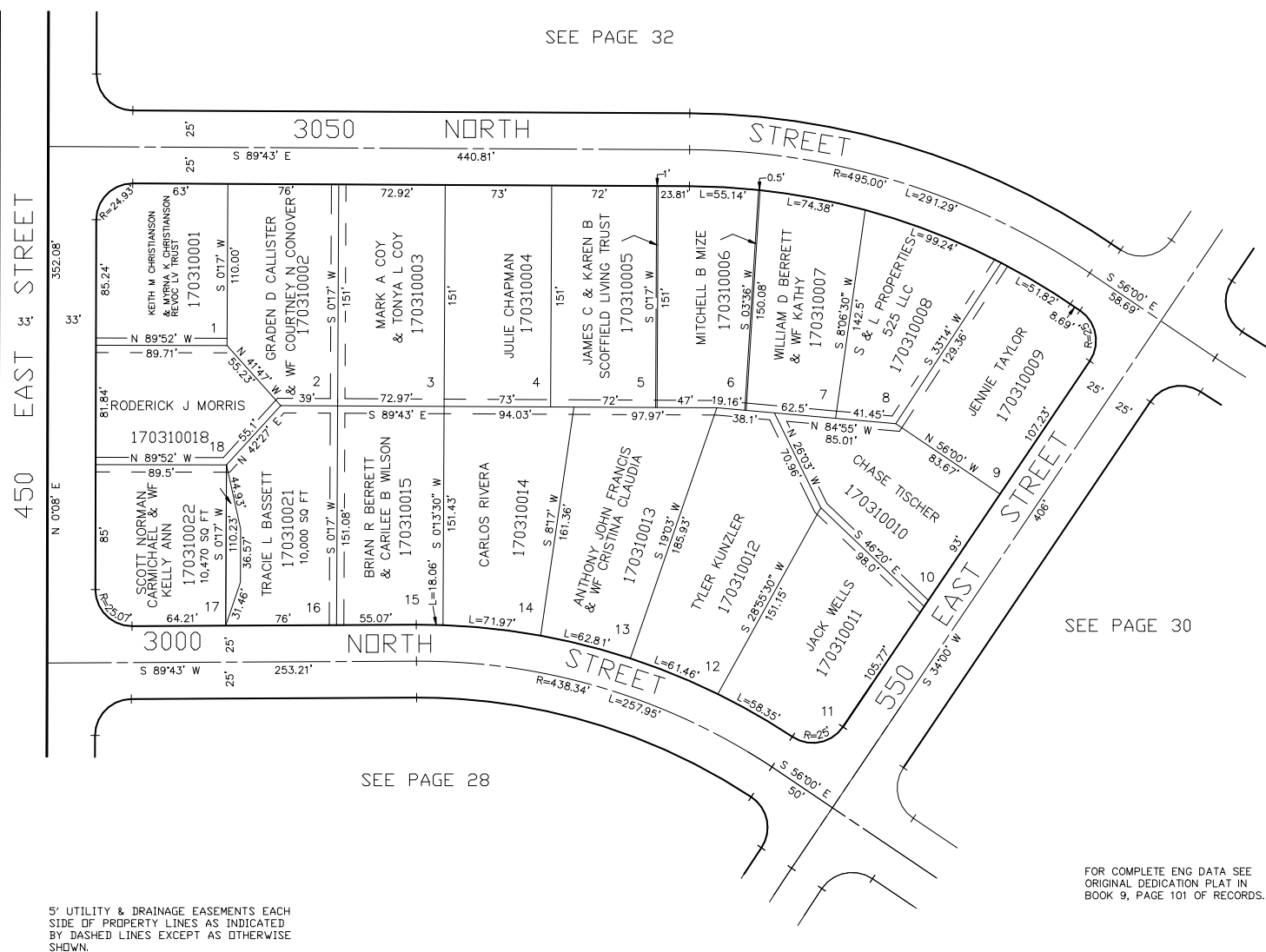
BLOCK 4

TAXING UNIT: 10

IN NORTH OGDEN CITY

SCALE 1" = 60'

SEE PAGE 32



SEE PAGE 30

SEE PAGE 28

FOR COMPLETE ENG DATA SEE
ORIGINAL DEDICATION PLAT IN
BOOK 9, PAGE 101 OF RECORDS.5' UTILITY & DRAINAGE EASEMENTS EACH
SIDE OF PROPERTY LINES AS INDICATED
BY DASHED LINES EXCEPT AS OTHERWISE
SHOWN.

FOR TAX PURPOSES ONLY

PW 7-97