

PART OF THE N.W. 1/4 OF SECTION 28, T.7N., R.1W., S.L.B. & M.

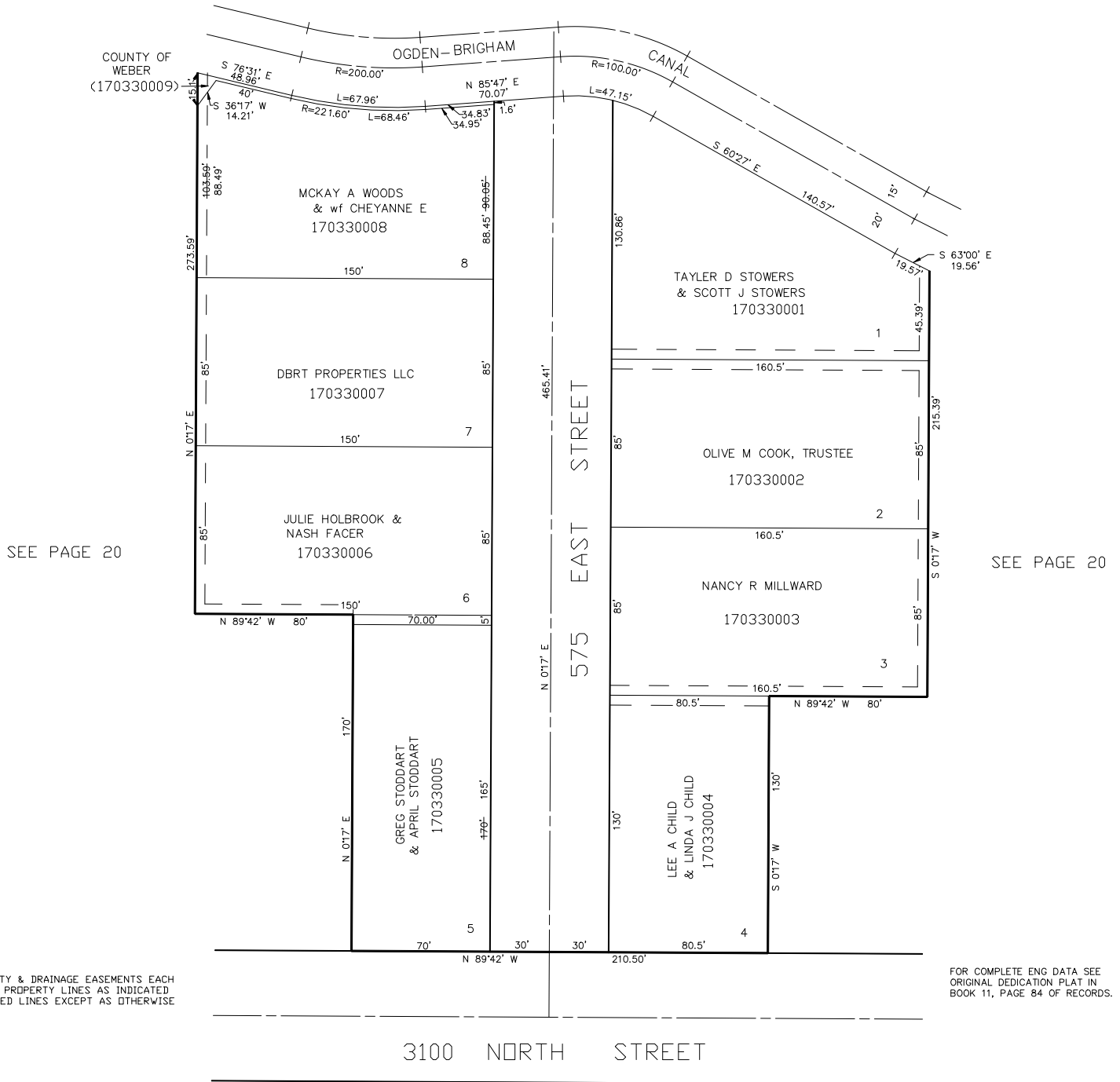
MARVELLA HEIGHTS NO. 1

IN NORTH OGDEN CITY

TAXING UNIT: 10

SCALE 1" = 40'

SEE PAGE 34



SEE PAGE 20

FOR TAX PURPOSES ONLY