

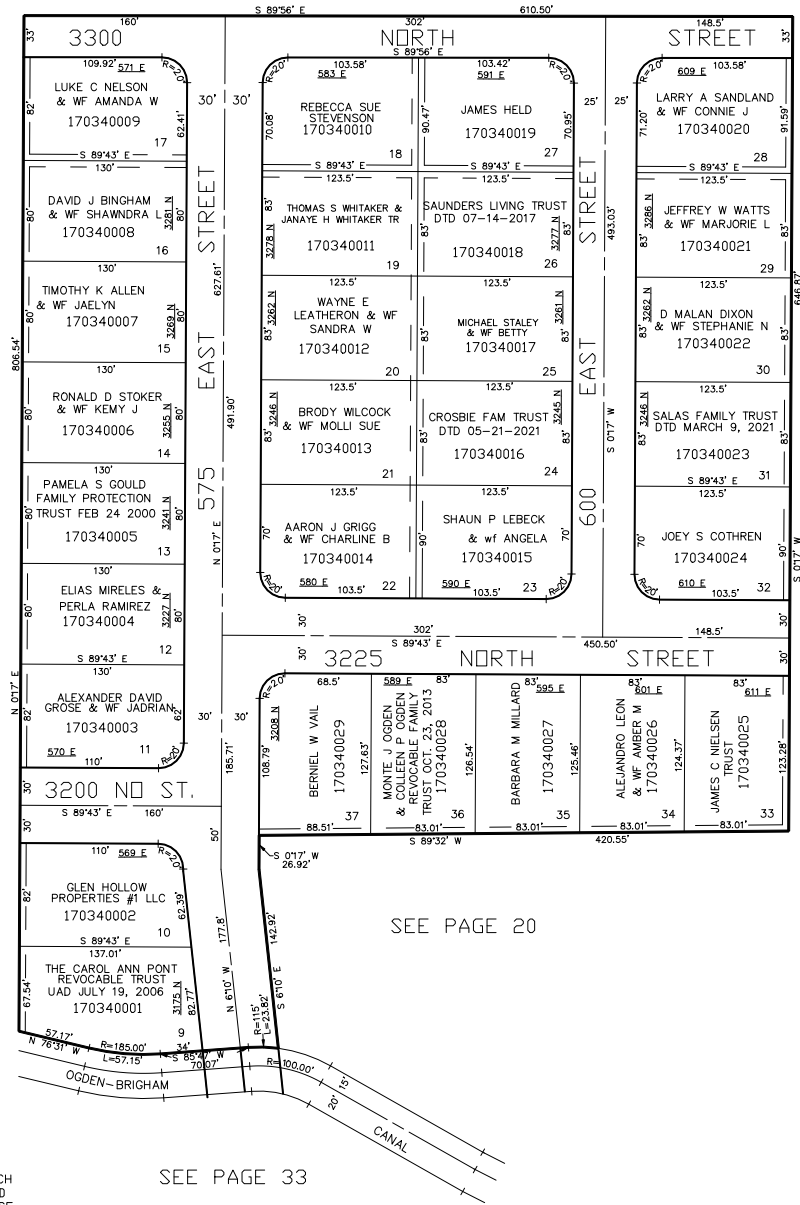
PART OF THE N.W. 1/4 OF SECTION 28, T.7N., R.1W., S.L.B. & M.  
**MARVELLA HEIGHTS NO. 2**

IN NORTH OGDEN CITY  
SCALE 1" = 60'

TAXING UNIT:10

SEE BOOK 17, PAGE 42

SEE PAGE 20



SEE PAGE 20

SEE PAGE 33

SEE PAGE 20

5' UTILITY & DRAINAGE EASEMENTS EACH  
SIDE OF PROPERTY LINES AS INDICATED  
BY DASHED LINES EXCEPT AS OTHERWISE  
SHOWN.

FOR COMPLETE ENG DATA SEE  
ORIGINAL DEDICATION PLAT IN  
BOOK 12, PAGE 27 OF RECORDS.