

PART OF THE N.W. 1/4 OF SECTION 28 & S.W. 1/4, OF SECTION 21, T.7N., R.1W., S.L.B. & M.

36

## PARADISE HILLS

LOTS 19-30

TAXING UNIT: 10

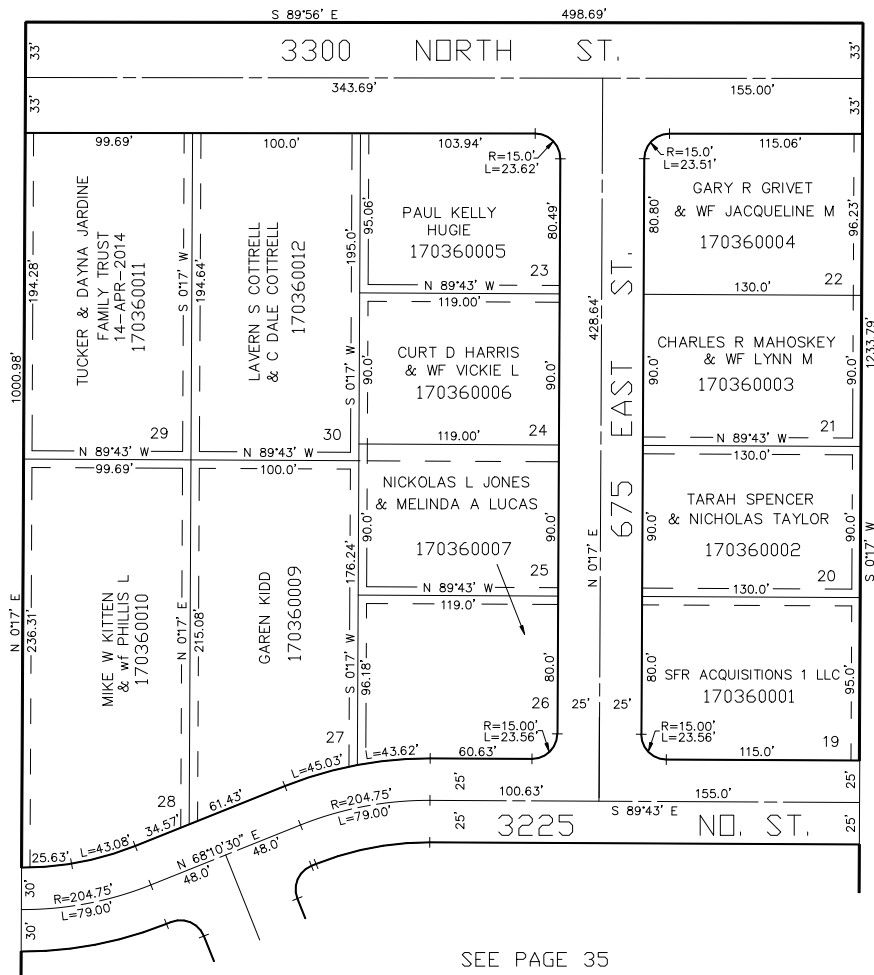
IN NORTH OGDEN CITY

SCALE 1" = 60'

SEE BOOK 16, PAGE 42

SEE PAGE 34

SEE PAGE 25



SEE PAGE 35

5' UTILITY & DRAINAGE EASEMENTS EACH  
SIDE OF PROPERTY LINES AS INDICATED  
BY DASHED LINES EXCEPT AS OTHERWISE  
SHOWN.

FOR COMPLETE ENG DATA SEE  
ORIGINAL DEDICATION PLAT IN  
BOOK 13, PAGE 12 OF RECORDS.