

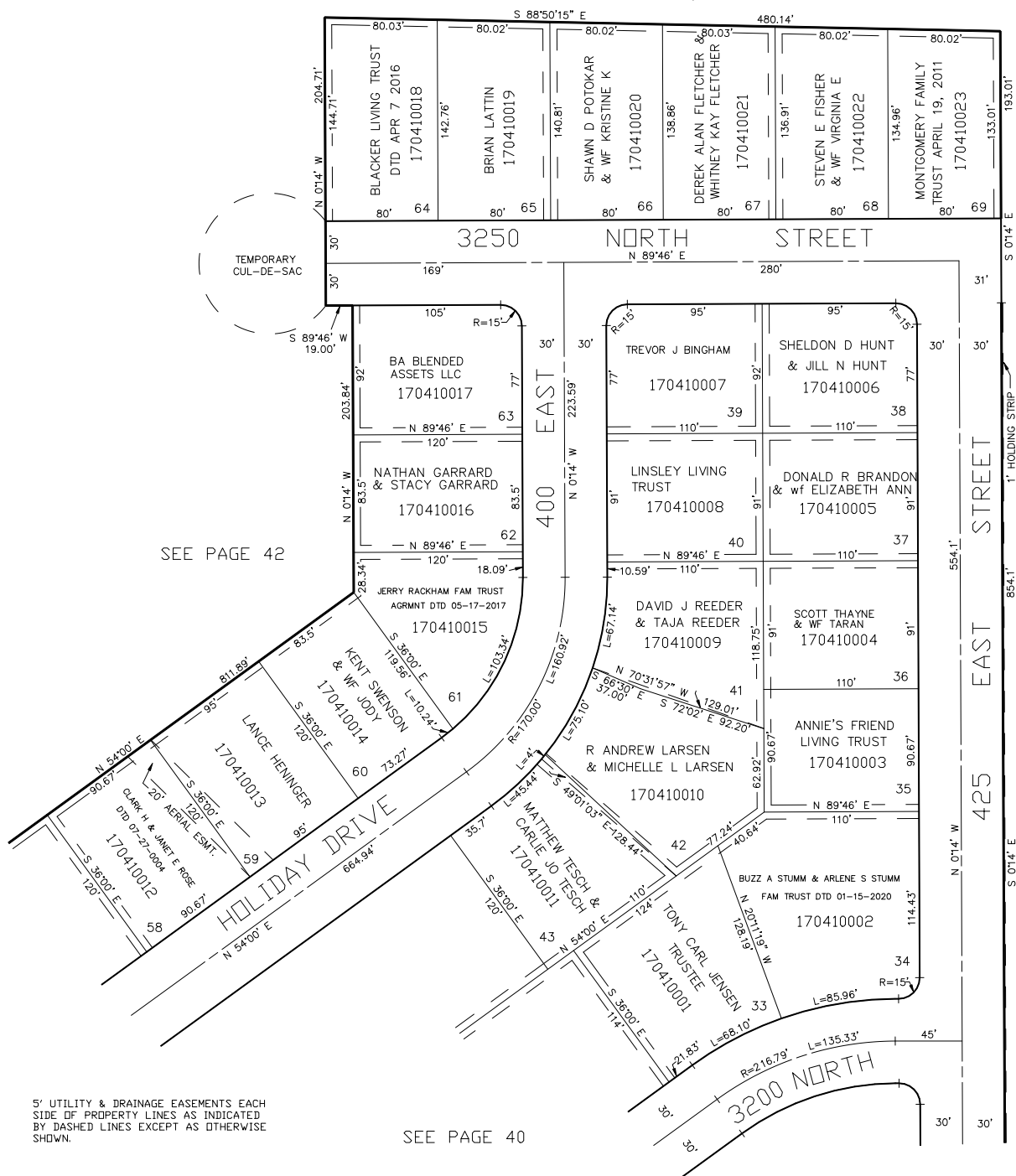
LOTS 33-43, 58-69

TAXING UNIT: 10

IN NORTH OGDEN CITY

SCALE 1" = 60'

SEE BOOK 16, PAGE 37



SEE PAGE 38-1

FOR COMPLETE ENG DATA SEE
ORIGINAL DEDICATION PLAT IN
BOOK 12, PAGE 69 OF RECORDS.

FOR TAX PURPOSES ONLY

PW 7-97