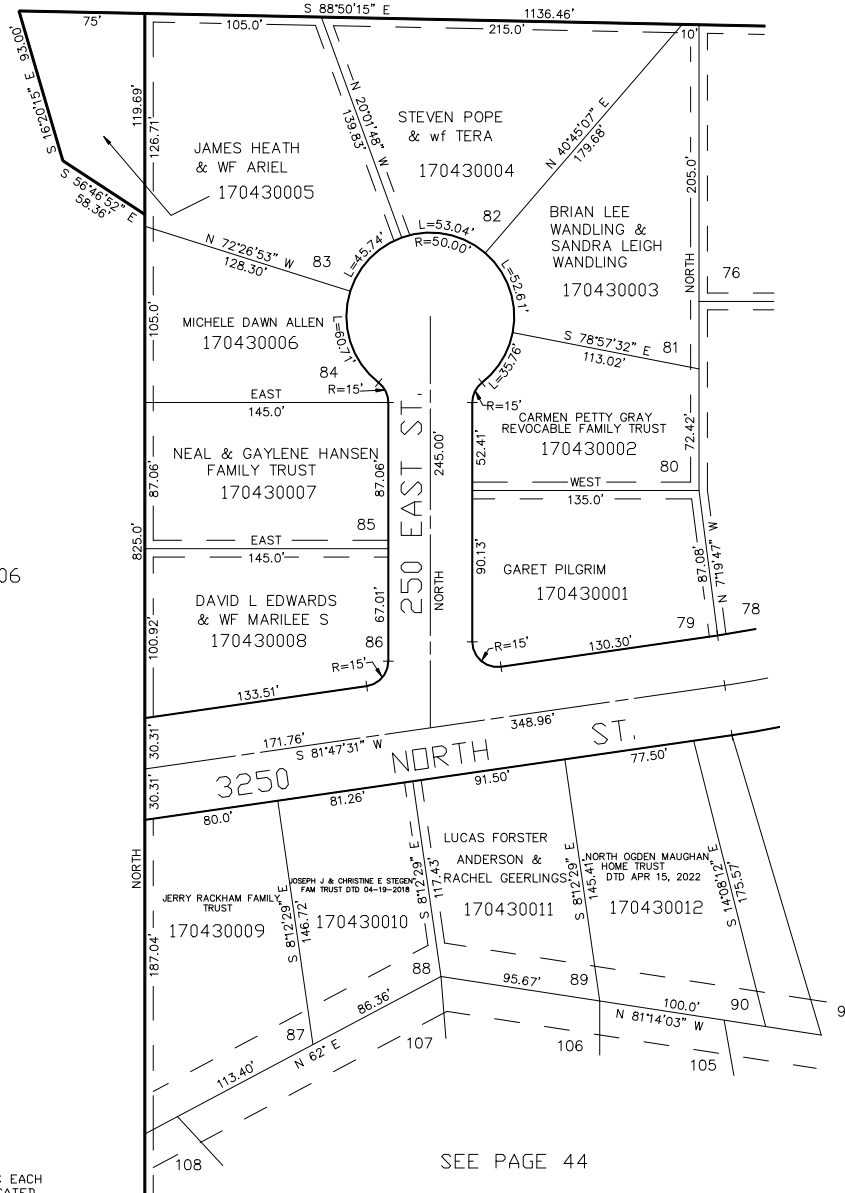


PART OF SECTION 29, T.7N., R.1W., S.L.B & M.  
**MT. LOMOND ESTATES NO. 2**

TAXING UNIT: 10

LOTS 79-90  
IN NORTH OGDEN CITY  
SCALE 1" = 60'

SEE BOOK 16, PAGE 37



FOR COMPLETE ENG DATA SEE  
ORIGINAL DEDICATION PLAT IN  
BOOK 13, PAGE 35 OF RECORDS.