

PART OF THE NORTH 1/2, OF SECTION 29, T.7N., R.1W., S.L.B. & M.

FAIRFIELD ACRES SUBDIVISION

PLAT 1

LOTS 1-5, 17-22

IN NORTH OGDEN CITY

SCALE 1" = 50'

TAXING UNIT: 10

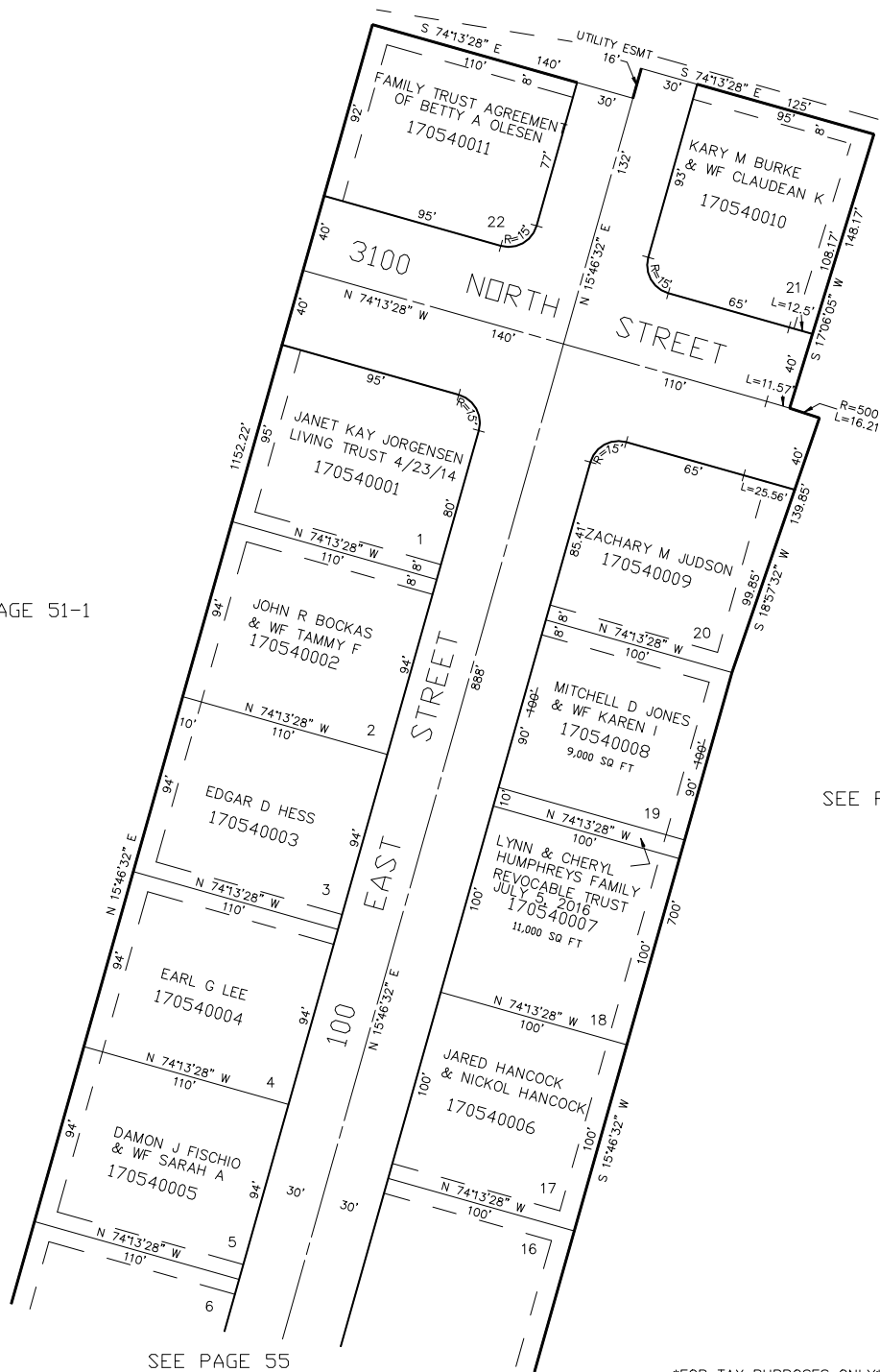
SEE PAGE 56

SEE PAGE 51-1

SEE PAGE 102

10' UTILITY & DRAINAGE EASEMENTS EACH
SIDE OF PROPERTY LINES AS INDICATED
BY DASHED LINES EXCEPT AS OTHERWISE
SHOWN.

FOR COMPLETE ENG DATA SEE
ORIGINAL DEDICATION PLAT IN
BOOK 12, PAGE 72 OF RECORDS.



SEE PAGE 55

FOR TAX PURPOSES ONLY

PW 7-97