

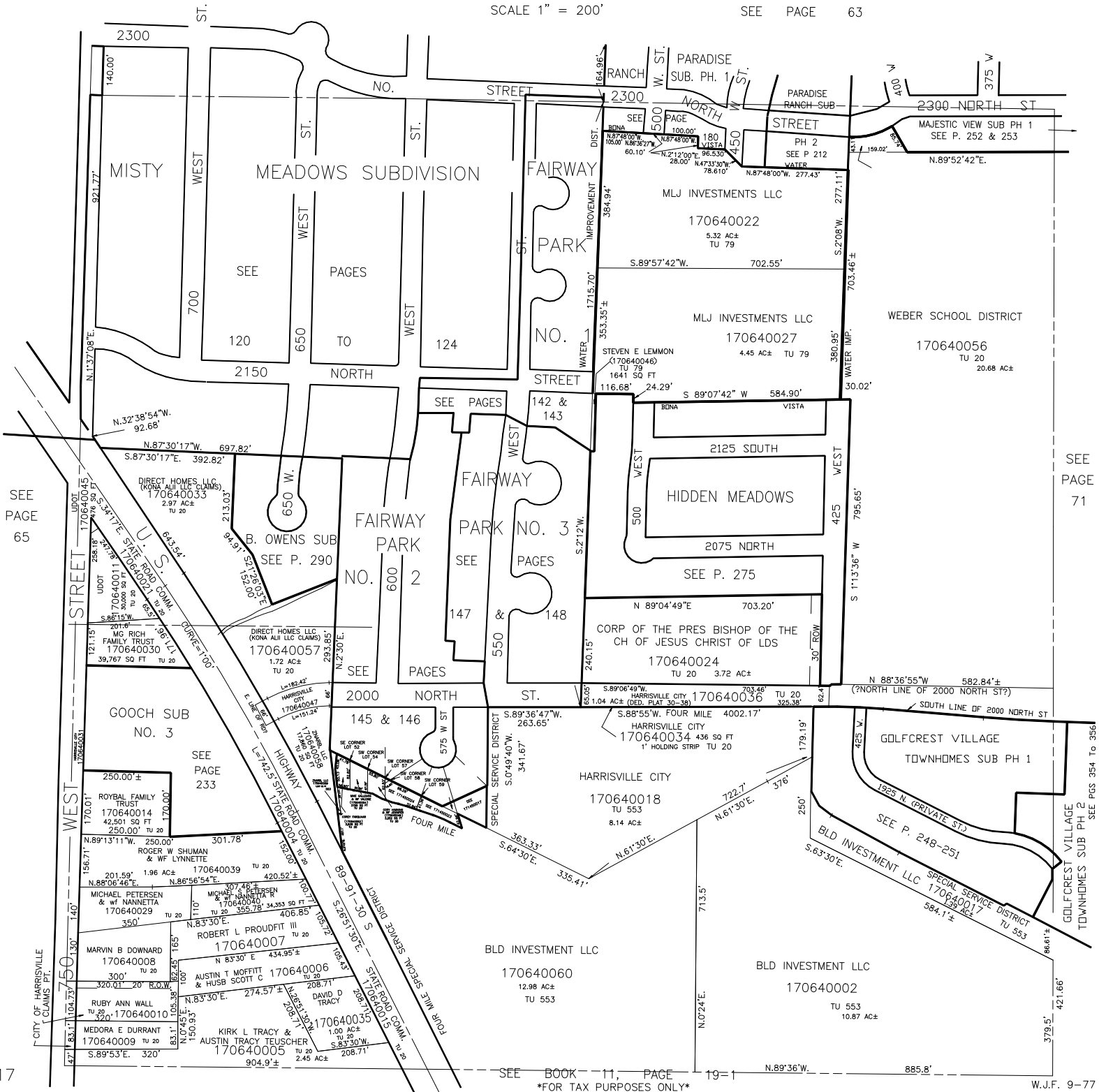
S.E. 1/4
SECTION 31, T.7N., R.1W., S.L.B. & M.

TAXING UNIT: 12, 17, 20, 79, 553

TOWNS OF HARRISVILLE & PLEASANT VIEW

SCALE 1" = 200'

SEE PAGE 63



SEE
PAGE
65

SEE
PAGE
71