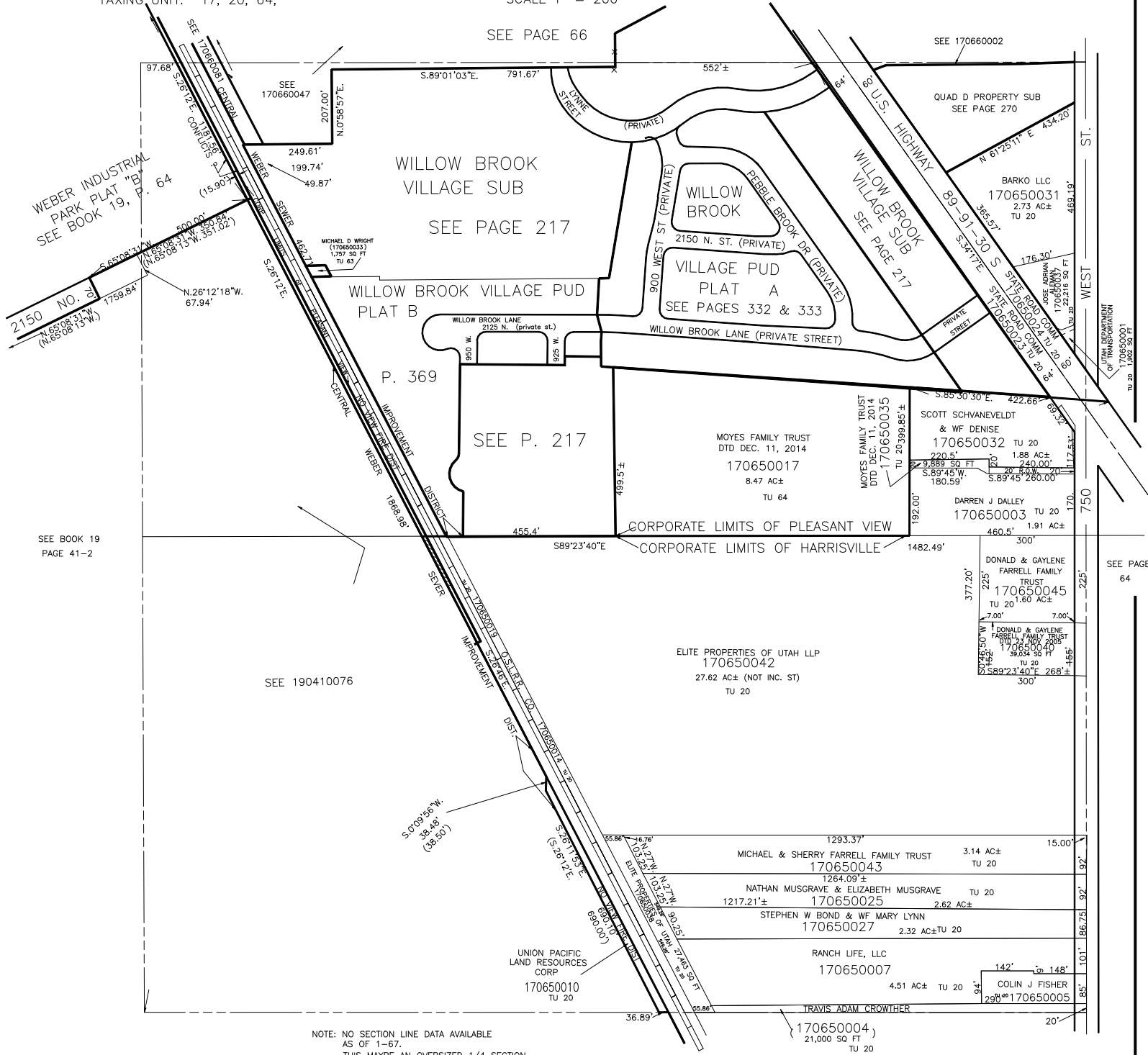


S.W. 1/4
SECTION 31, T.7N., R.1W., S.L.B. & M.

TOWNS OF HARRISVILLE & PLEASANT VIEW & HARRISVILLE DISTRICT

TAXING UNIT: 17, 20, 64,

SCALE 1" = 200'



FOR TAX PURPOSES ONLY

J.C.F. 12-66