

PART OF S.W. 1/4
SECTION 33, T.7N., R.1W., S.L.B. & M.

TAXING UNIT: 10

IN NORTH OGDEN CITY

SCALE 1" = 60'

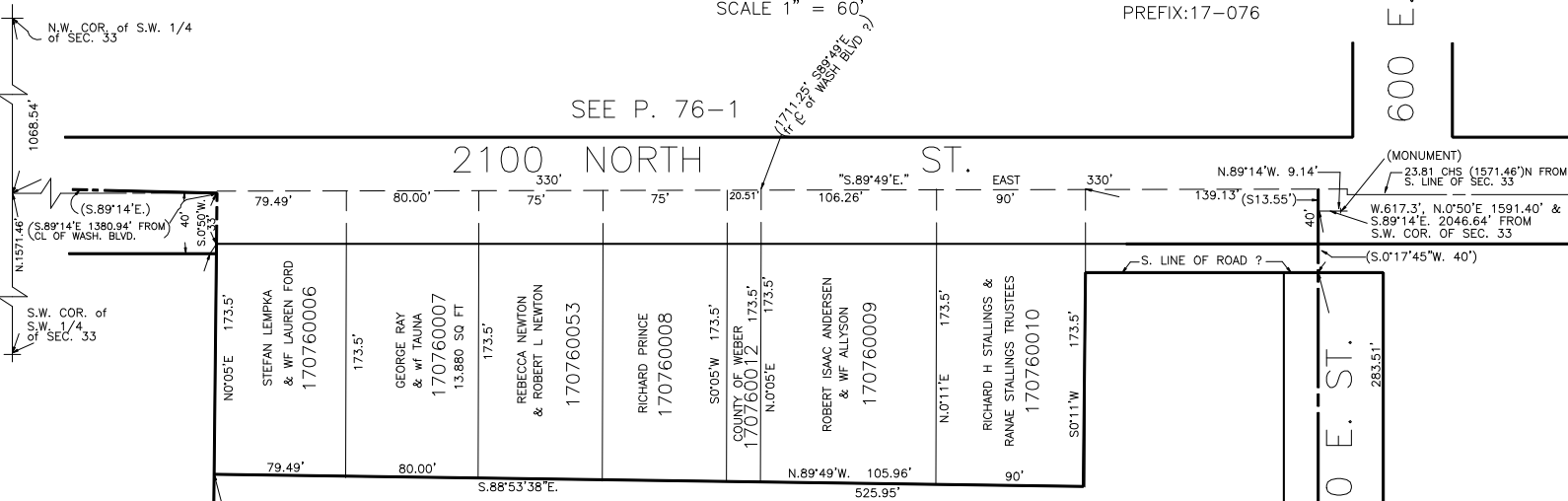
PREFIX:17-076

SEE P. 76-1

600 E.

2100 NORTH ST.

(MONUMENT)
23.81 CHS (1571.46') N FROM
S. LINE OF SEC. 33
W.617.3', N.0°50'E. 1591.40' &
S.89°14'E. 2046.64' FROM
S.W. COR. OF SEC. 33



THOROUGHbred ESTATES SUB.

2050 NORTH STREET

2050 N.

SEE P. 181

575 E. ST.

170760076
NORTH OGDEN
CITY
2.11 AC±

SEE P. 76

STONE CREEK
PHASE 1 P.R.U.D.

2025 N.

SEE PAGE
140

550 E.

GREEN ACRES ESTATES

SEE P. 77

FOR TAX PURPOSES ONLY