

PARTS OF S.E. 1/4 OF SEC. 32, & S.W. 1/4 OF SEC. 33, T.7N., R.1W., S.L.B. & M.

78

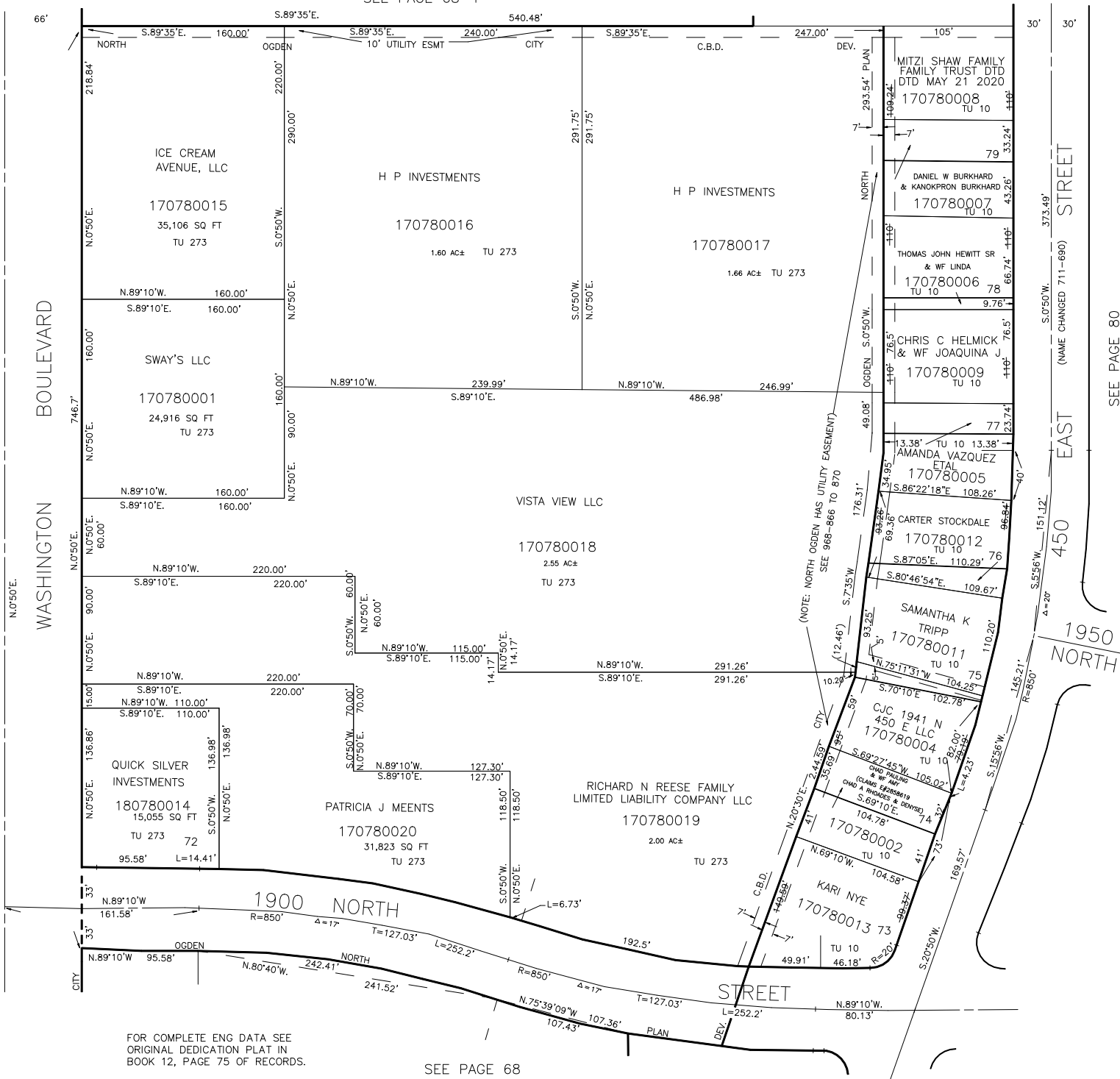
# JILLVILLE SUBDIVISION NO. 1

78

TAXING UNITS: 10,273

LOTS 72-79  
IN NORTH OGDEN CITY  
SCALE 1" = 60'

SEE PAGE 68-1



FOR COMPLETE ENG DATA SEE  
ORIGINAL DEDICATION PLAT IN  
BOOK 12, PAGE 75 OF RECORDS.

SEE PAGE 68

\*FOR TAX PURPOSES ONLY\*

O.A. 5-61

SEE PAGE 68

SEE PAGE 80