

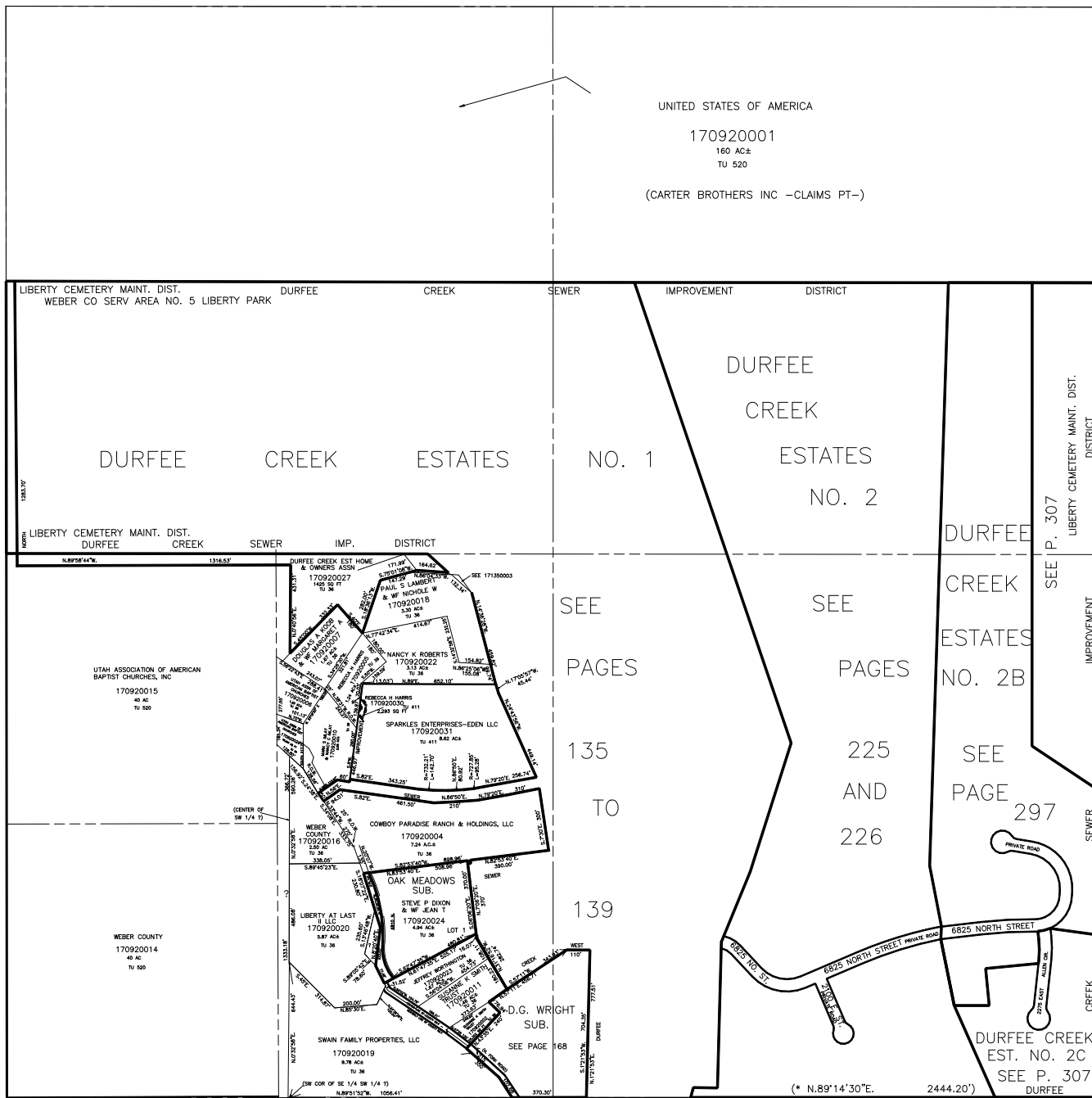
# SECTION 36, T.8N., R.1W., S.L.B. & M.

NORTH OGDEN DISTRICT

TAXING UNIT: 58, 36, 411, 520

SCALE 1" = 400'

SEE P. 91



THIS S 1/4 COR. BASED ON COURT ORDER (1020-509)  
DATA BASED ON CORRECTED W.D. BOOK 940 PG 114

SEE BOOK 16, P. 1

\*FOR TAX PURPOSES ONLY\*

SEE BOOK 23, P. 44