

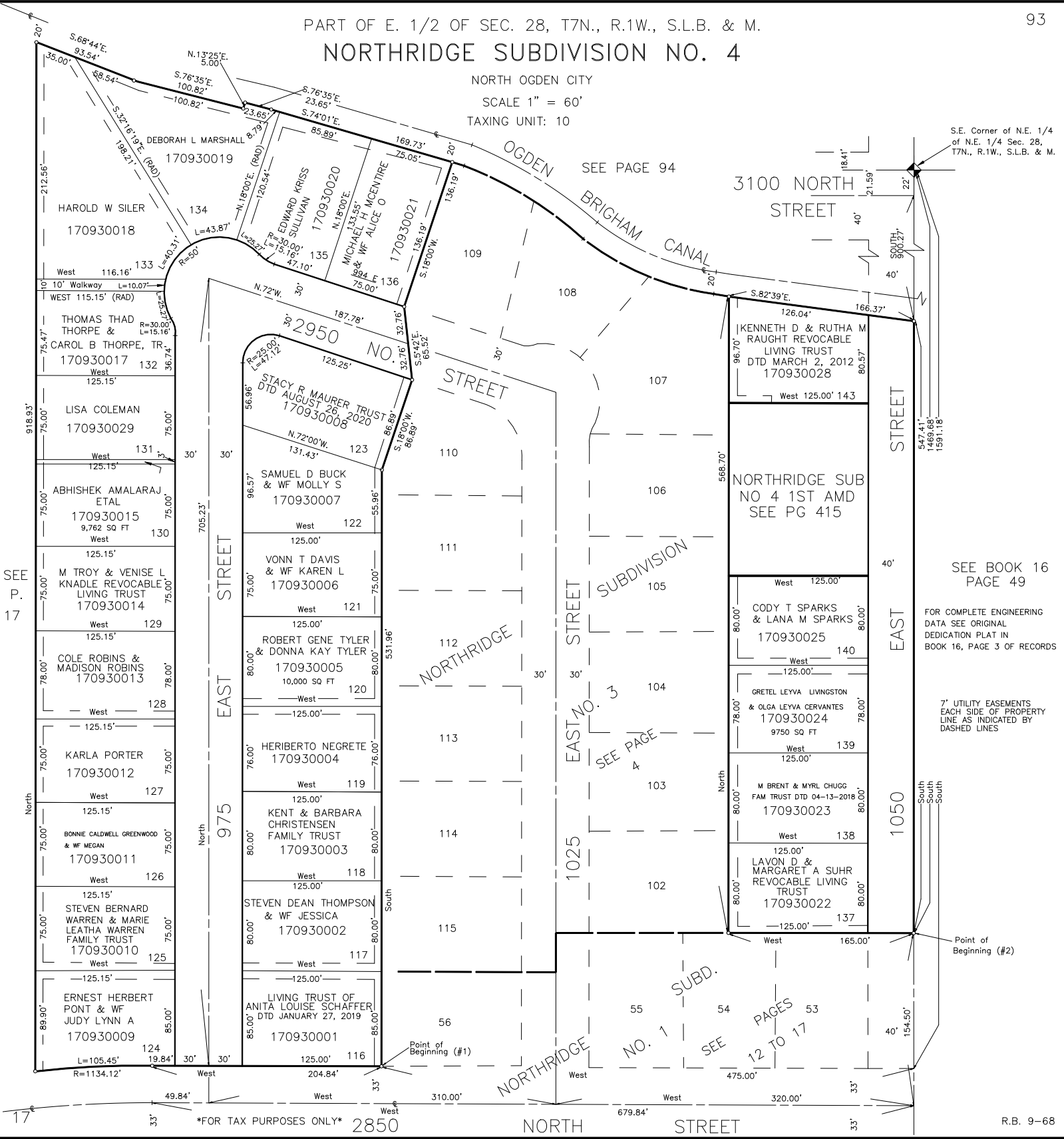
PART OF E. 1/2 OF SEC. 28, T7N., R.1W., S.L.B. & M.
NORTHRIDGE SUBDIVISION NO. 4

NORTH OGDEN CITY
SCALE 1" = 60'
TAXING UNIT: 10

SEE PAGE 94

3100 NORTH
STREET

S.E. Corner of N.E. 1/4
of N.E. 1/4 Sec. 28,
T7N., R.1W., S.L.B. & M.



SEE
P.
17

FOR TAX PURPOSES ONLY

R.B. 9-68