

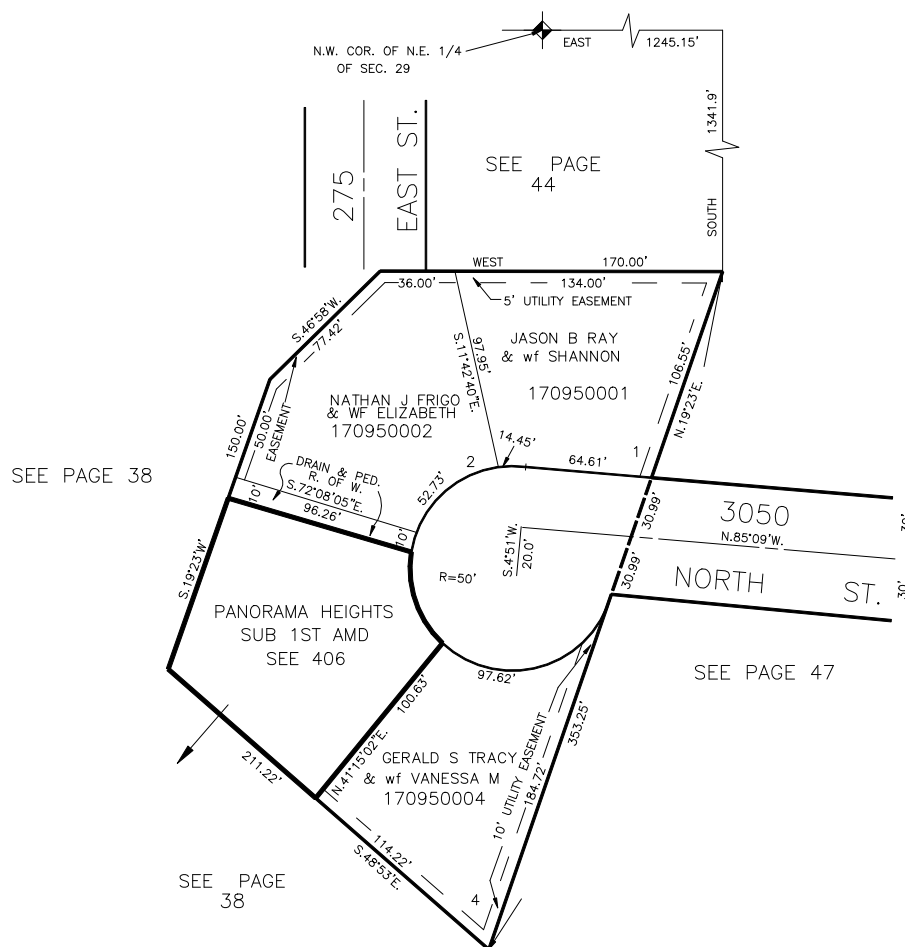
PART OF THE N.E. 1/4, OF SEC. 29, T.7N., R.1W., S.L.B. & M.

PANORAMA HEIGHTS SUBDIVISION

IN NORTH OGDEN CITY

SCALE 1" = 50'

TAXING UNIT: 10



FOR COMPLETE ENG DATA SEE
ORIGINAL DEDICATION PLAT IN
BOOK 16, PAGE 96 OF RECORDS.

10' UTILITY & DRAINAGE EASEMENTS EACH
SIDE OF PROPERTY LINES AS INDICATED
BY DASHED LINES EXCEPT AS OTHERWISE
SHOWN.

FOR TAX PURPOSES ONLY

W.F.J. 7-71