

PART OF N.W. 1/4 OF SEC. 29, T.7N., R.1W., S.L.B. & M.

100

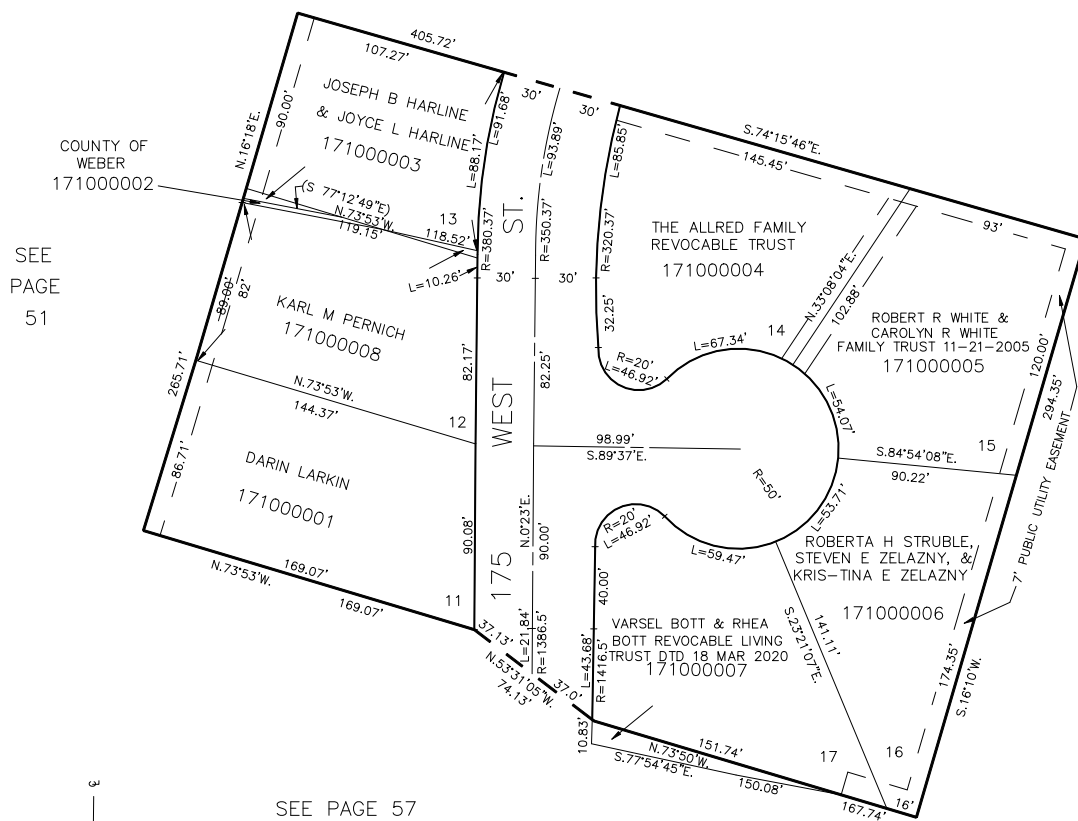
TAYLOR ESTATES PLAT II

IN NORTH OGDEN CITY

TAXING UNIT: 10

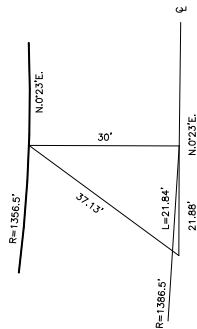
SCALE 1" = 50'

SEE PAGE 51



SEE PAGE 51

SEE PAGE 57



FOR COMPLETE ENG. DATA
SEE ORIG. DED. PLAT IN
BOOK 17, PAGE 55