

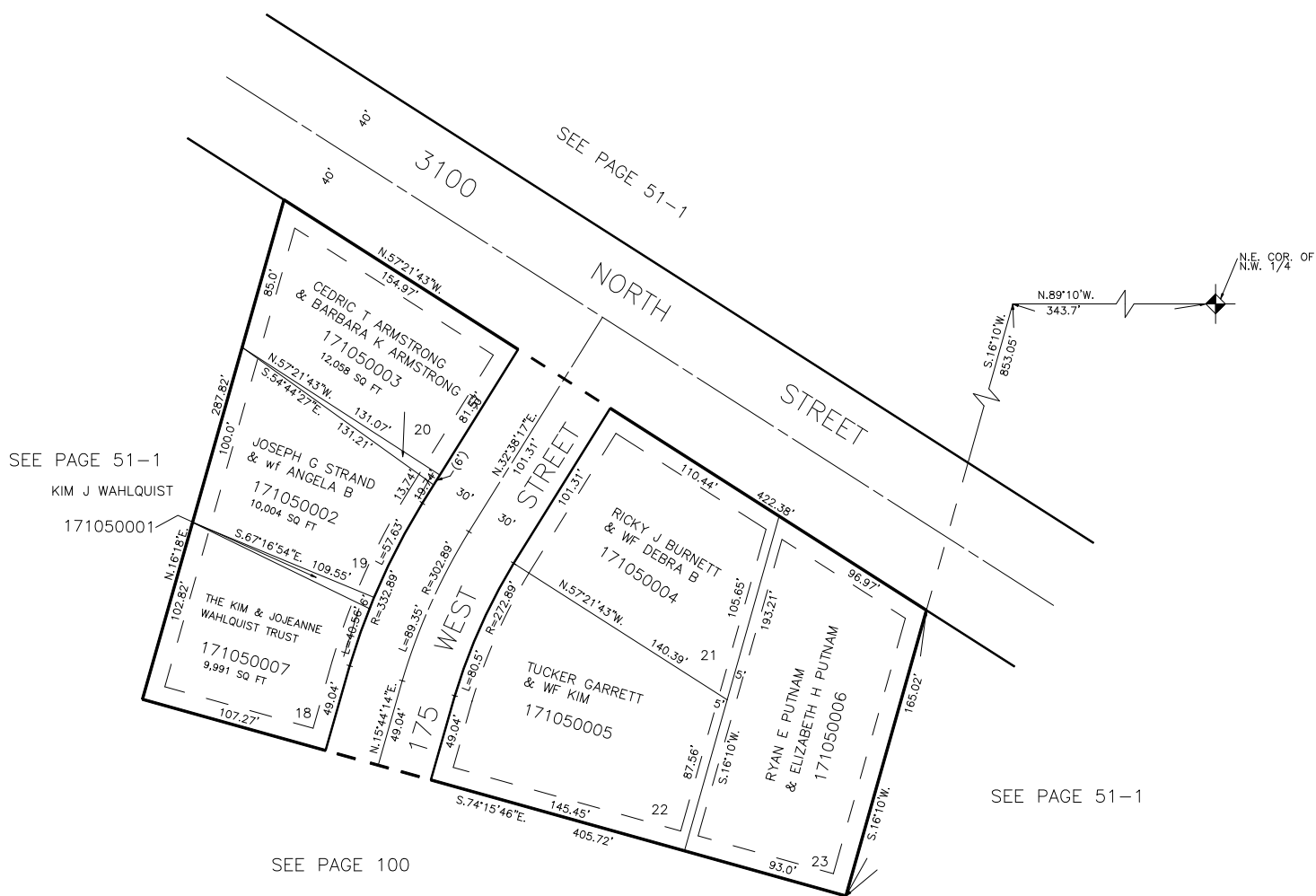
PART OF THE N.W. 1/4, OF SECTION 29, T.7N., R.1W., S.L.B. & M.

## TAYLOR ESTATES SUBDIVISION PLAT III

IN NORTH OGDEN CITY

SCALE 1" = 50'

TAXING UNIT: 10



FOR COMPLETE ENG DATA SEE  
ORIGINAL DEDICATION PLAT IN  
BOOK 18, PAGE 71 OF RECORDS.

10' UTILITY & DRAINAGE EASEMENTS EACH  
SIDE OF PROPERTY LINES AS INDICATED  
BY DASHED LINES EXCEPT AS OTHERWISE  
SHOWN.

\*FOR TAX PURPOSES ONLY\*

W F J 12-74