

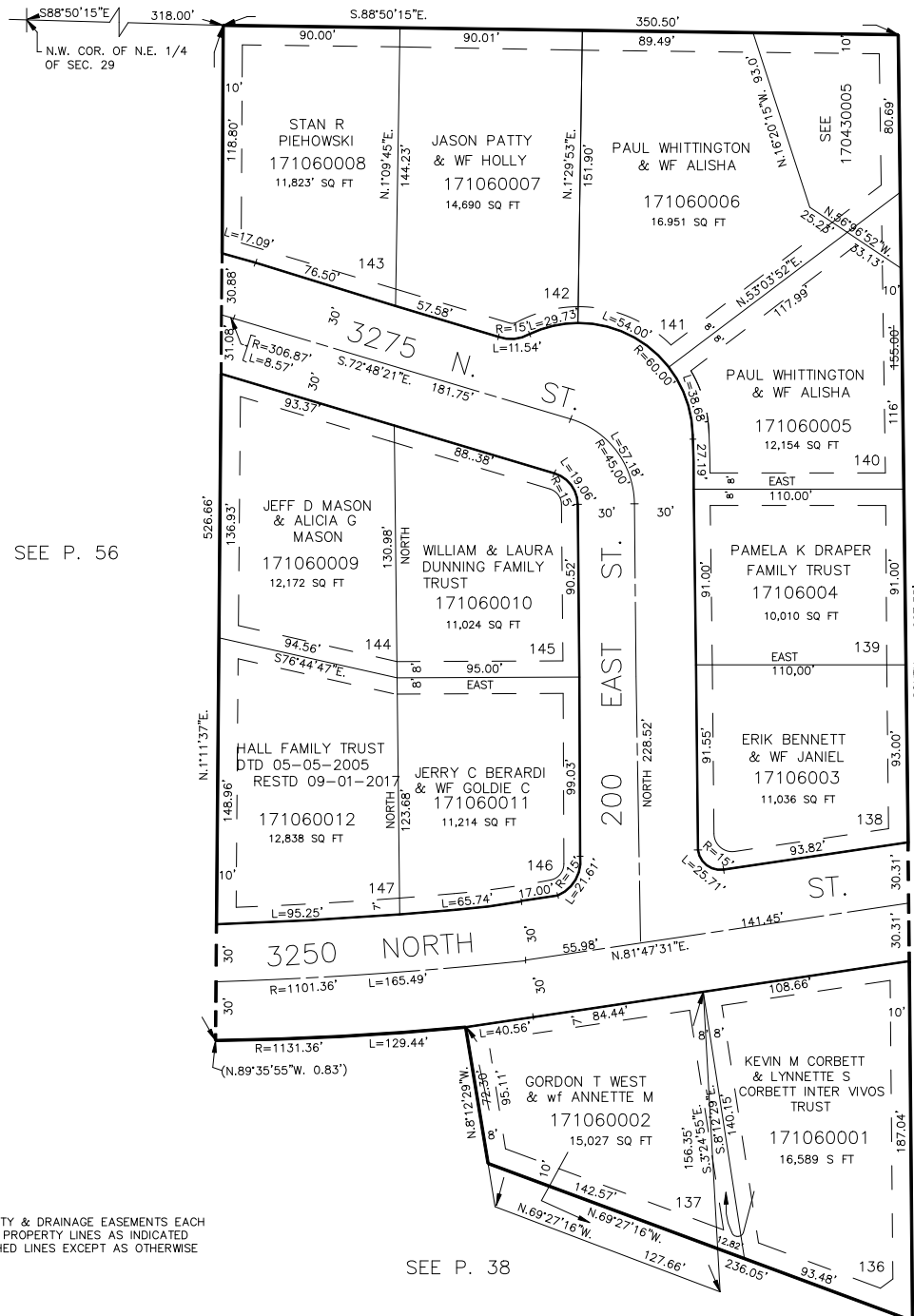
PART OF SEC. 28, T.7N., R.1W., S.L.B. & M.
MT. LOMOND ESTATES NO.3

IN NORTH OGDEN CITY

TAXING UNIT: 10

SCALE 1" = 50'

SEE BOOK 16, P. 3.7-2



FOR COMPLETE ENG DATA SEE ORIGINAL DEDICATION PLAT IN BOOK 18, PAGE 76 OF RECORDS.

SEE P. 38

SEE P. 43

SEE P. 56

FOR TAX PURPOSES ONLY

R.B. 3-75