

PART OF THE S.E. 1/4, OF SEC. 28, T.7N., R.1W., S.L.B. & M.

112

SCOTTISH HIGHLANDS SUBDIVISION

PLAT 2

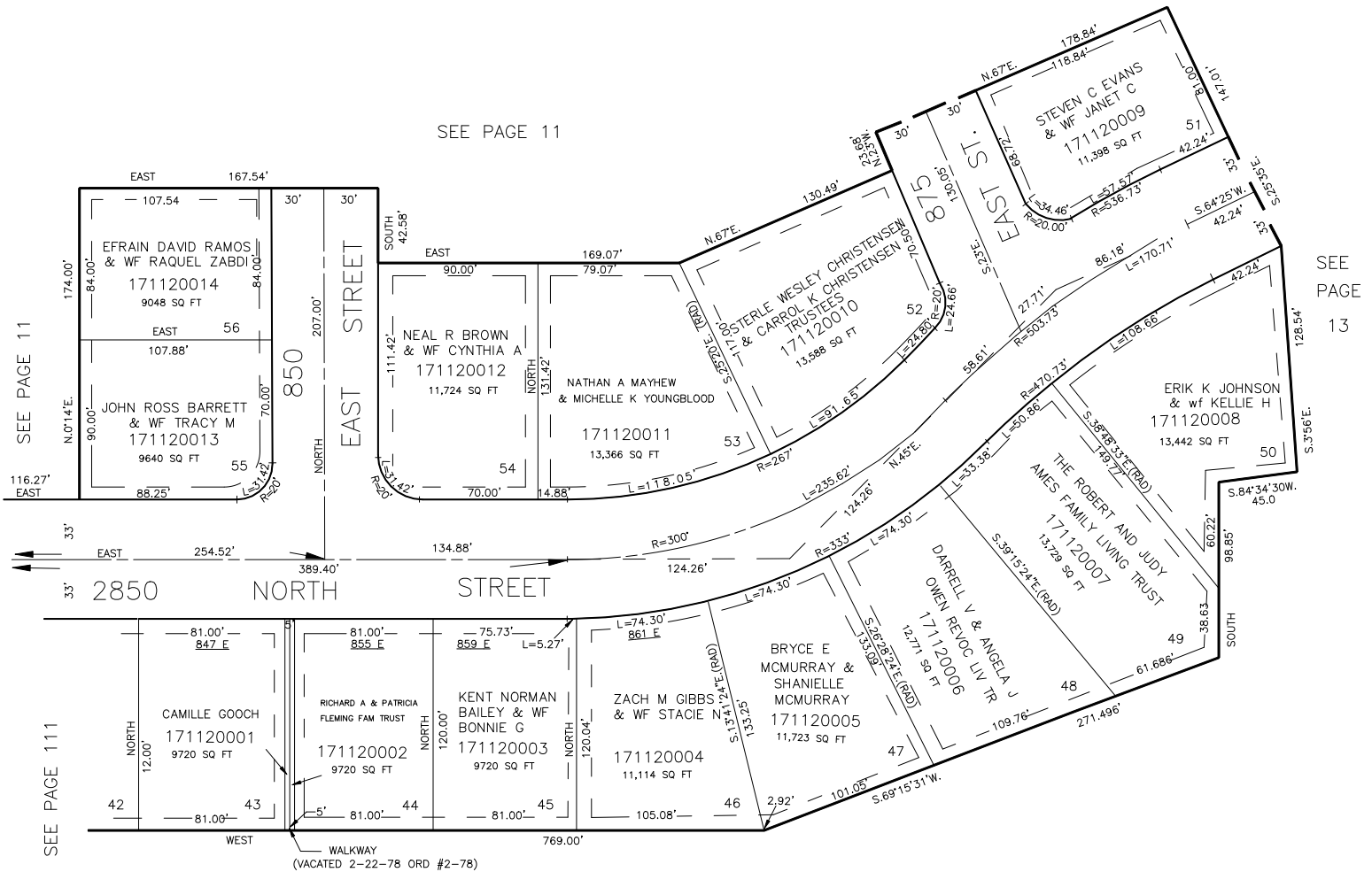
LOTS 43-56

IN NORTH OGDEN CITY

SCALE 1" = 50'

TAXING UNIT: 10

SEE PAGE 11



7' PUBLIC UTILITY & IRRIGATION EASEMENT
(TYPICAL ALL EASEMENTS)

SEE PAGE 97

10' UTILITY & DRAINAGE EASEMENTS EACH
SIDE OF PROPERTY LINES AS INDICATED
BY DASHED LINES EXCEPT AS OTHERWISE
SHOWN.

FOR COMPLETE ENG DATA SEE
ORIGINAL DEDICATION PLAT IN
BOOK 19, PAGE 8 OF RECORDS.

FOR TAX PURPOSES ONLY

W.F.J. 8-75