

PART OF THE N.E. 1/4, OF SEC. 1, T.7N., R.1W., & PART OF SEC. 36, T8N., R1W., S.L.B. & M.

136

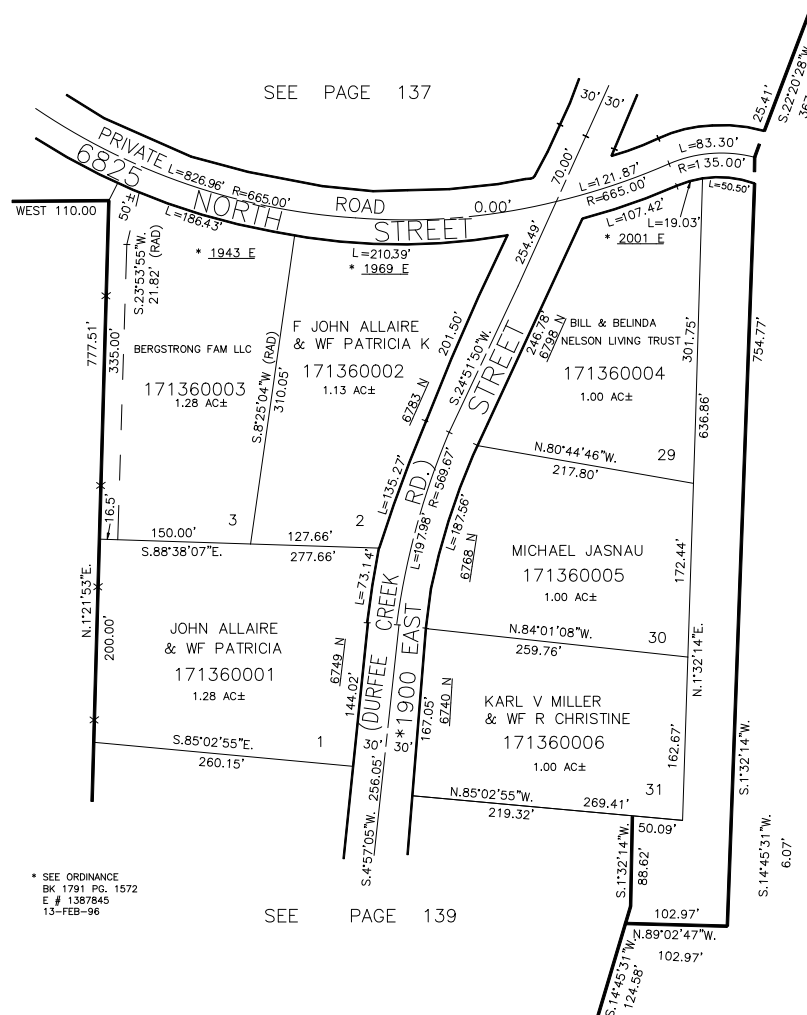
DURFEE CREEK ESTATES NO.1

LOTS 1-3, 29-31

IN WEBER COUNTY

SCALE 1" = 100'

TAXING UNIT: 411



FOR COMPLETE ENG DATA SEE
ORIGINAL DEDICATION PLAT IN
BOOK 23, PAGE 28, 29, 30 OF RECORDS.

10' UTILITY & DRAINAGE EASEMENTS EACH
SIDE OF PROPERTY LINES AS INDICATED
BY DASHED LINES EXCEPT AS OTHERWISE
SHOWN.

FOR TAX PURPOSES ONLY

W.F.J. 9-80