

PART OF THE S.E.1/4, OF SEC. 32, T.7N., R.1W., S.L.B. & M.

COLDWATER CREEK CONDOMINIUMS PHASE 1

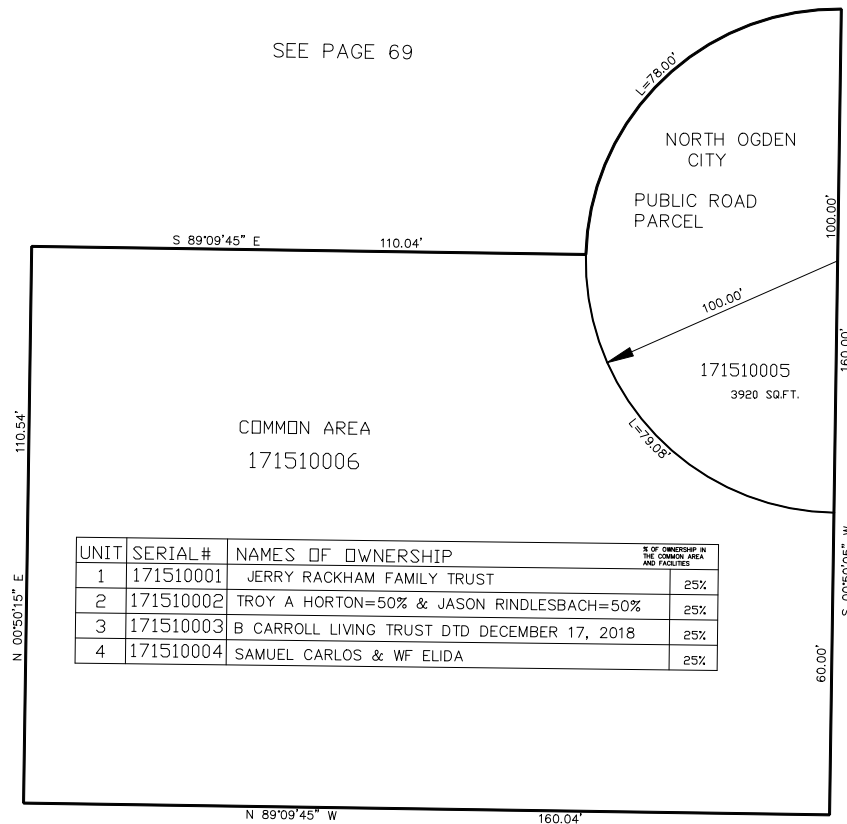
TAXING UNIT: 10

IN NORTH OGDEN CITY

SCALE 1" = 20'

SURVEY PLAT BOOK 27 OF DEDICATION PLATS, PAGES 12 & 13

SEE PAGE 69



UNIT	SERIAL#	NAMES OF OWNERSHIP	% OF OWNERSHIP IN THE COMMON AREA AND FACILITIES
1	171510001	JERRY RACKHAM FAMILY TRUST	25%
2	171510002	TROY A HORTON=50% & JASON RINDLESBACH=50%	25%
3	171510003	B CARROLL LIVING TRUST DTD DECEMBER 17, 2018	25%
4	171510004	SAMUEL CARLOS & WF ELIDA	25%