

PART OF SEC. 29, T.7N., R.1W., S.L.B. & M.  
**LARSON PARK SUBDIVISION PHASE 3**

TAXING UNIT: 10

LOTS 15 TO 18

IN NORTH OGDEN CITY

SCALE 1" TO 50'

SEE PAGE 38-1

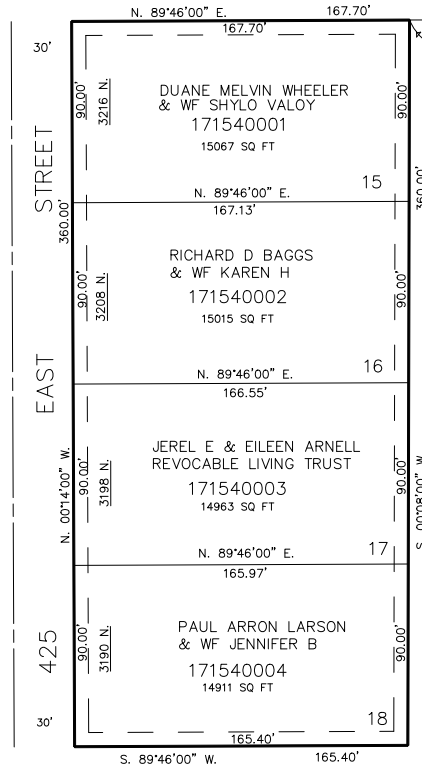
NE COR SEC.  
29, T7N, R1W,  
S.L.B. & M.

504.86

S. 00°08'00" W.

WEST 198.00'

POINT OF BEG.



SEE PAGE 38-1

SEE PAGE 38-1

7' UTILITY AND DRAINAGE EASEMENTS  
EACH SIDE OF PROPERTY LINE AS  
INDICATED BY DASHED LINES OR AS  
OTHERWISE SHOWN.

FOR COMPLETE ENG. DATA  
SEE ORIGINAL DEDICATION PLAT  
BOOK 27, PAGE 64.

SEE PAGE 38-1

\*FOR TAX PURPOSES ONLY\*