

PART OF S 1/2 SEC. 33, T.7 N., R.1 W., S.L.B. & M.  
GREENFIELD SUBDIVISION PHASE 2

155

LOTS 17 - 26

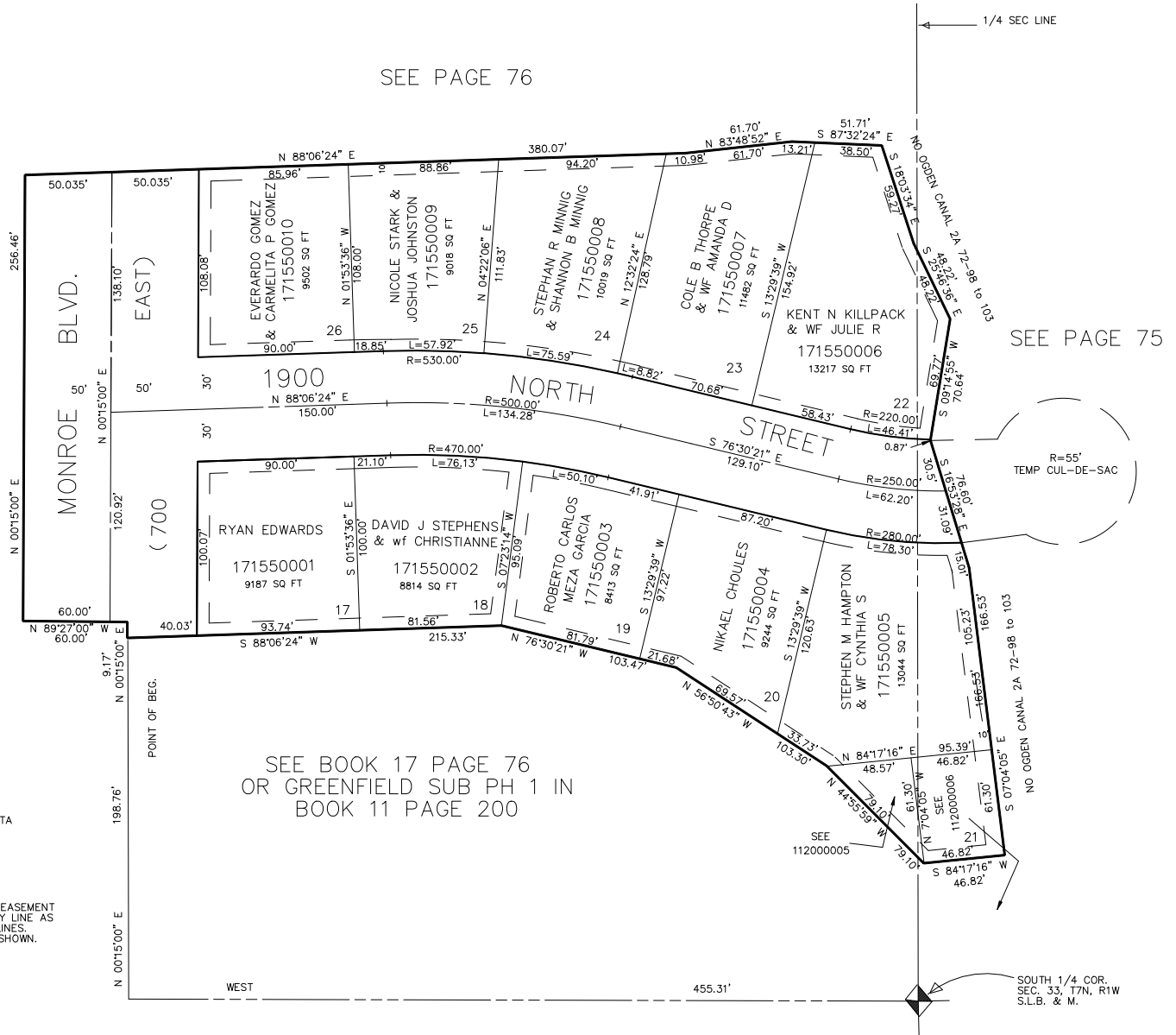
TAXING UNIT: 10

IN NORTH OGDEN CITY

SCALE 1" TO 50'

SEE PAGE 76

SEE PAGE 76



\*FOR TAX PURPOSES ONLY\*

S.H.L. 11-85