

PART OF THE EAST 1/2 OF SEC. 28, T.7N., R.1W., S.L.B. & M.
SCOTTISH HIGHLANDS SUBDIVISION-PLAT 4

167

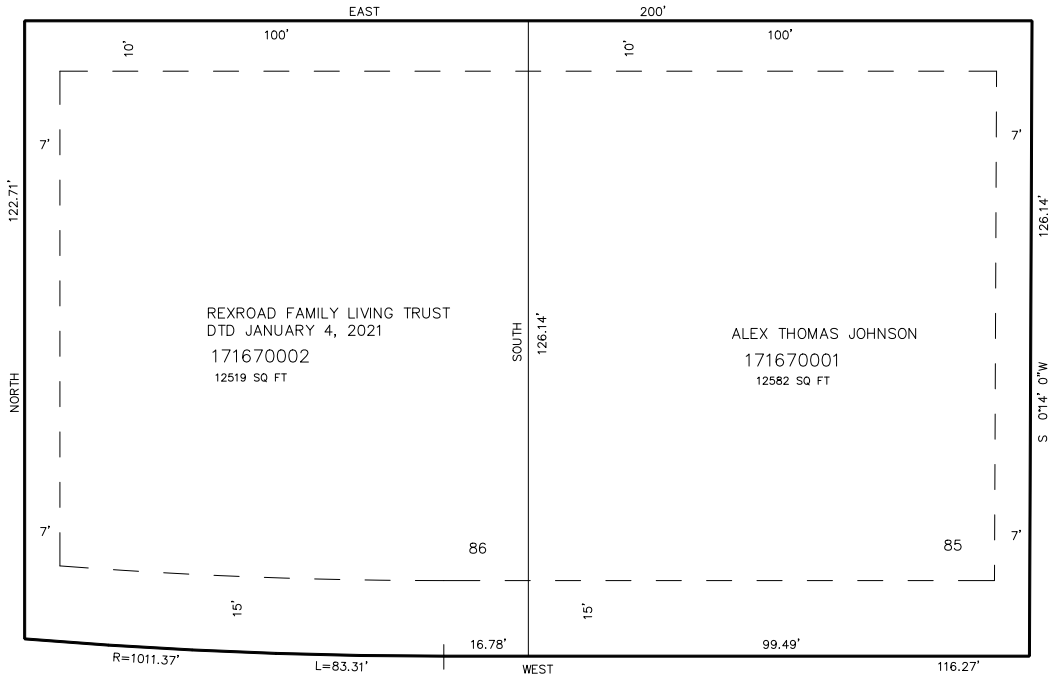
IN NORTH OGDEN CITY

TAXING UNIT: 10

SCALE 1"=20'

SEE PAGE 11

SEE PAGE
11



SEE PAGE
112

SEE PAGE 111

FOR COMPLETE ENG. DATA SEE
ORIGINAL DEDICATION PLAT IN
BOOK 29, PAGE 62 OF RECORDS.