

PART OF THE NE 1/4 OF SEC. 34, T.7N., R.1W., S.L.B. & M.
HERITAGE GROVE SUBDIVISION – PHASE 3

176

IN NORTH OGDEN CITY

TAXING UNIT: 10

SCALE 1" = 50'

SEE PAGE 84

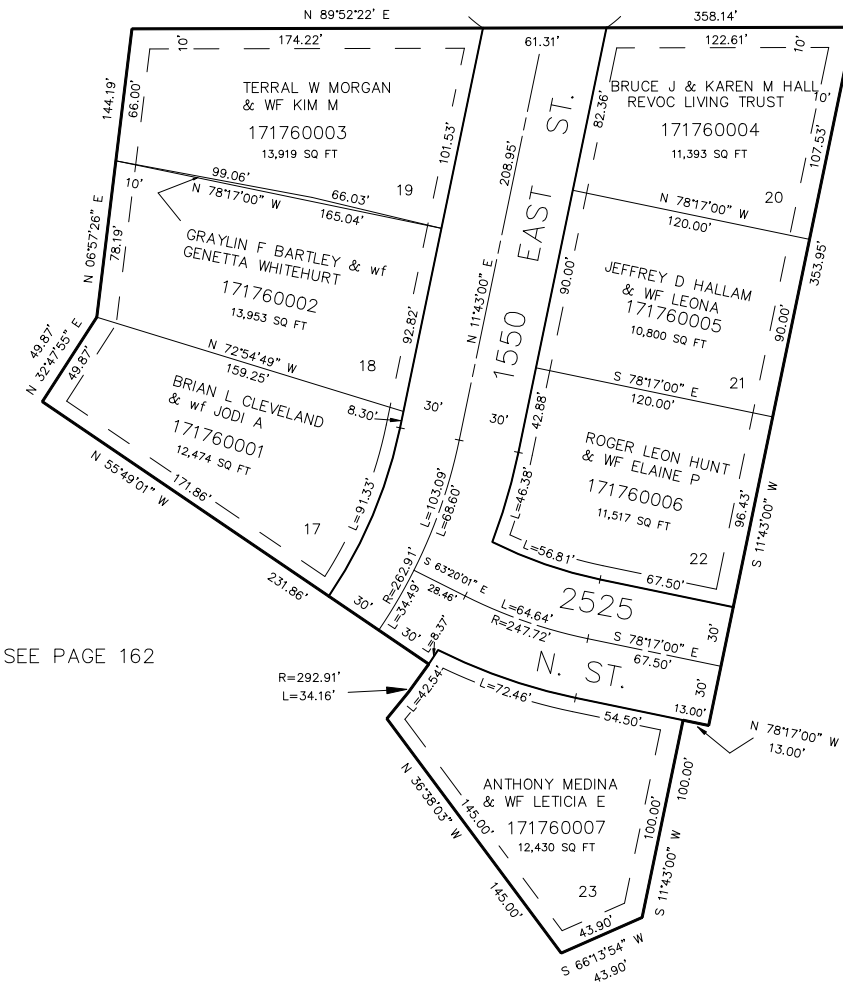
SEE PAGE 84

TEMP. CUL-DE-SAC
R=55'

SEE PAGE 84

SEE PAGE 84

SEE PAGE 162



7' UTILITY & DRAINAGE EASEMENTS EACH
SIDE OF PROPERTY LINES AS INDICATED
BY DASHED LINES EXCEPT AS OTHERWISE
SHOWN.

FOR COMPLETE ENG DATA SEE
ORIGINAL DEDICATION PLAT IN
BOOK 33, PAGE 18 OF RECORDS.

FOR TAX PURPOSES ONLY

KST 4-91