

PART OF THE S.E. 1/4, SEC. 28, T.7N., R.1W., S.L.B. & M.
DEER HOLLOW SUBDIVISION PLAT 1

IN NORTH OGDEN CITY
SCALE 1" = 50'

TAXING UNIT: 10

SEE PAGE 18

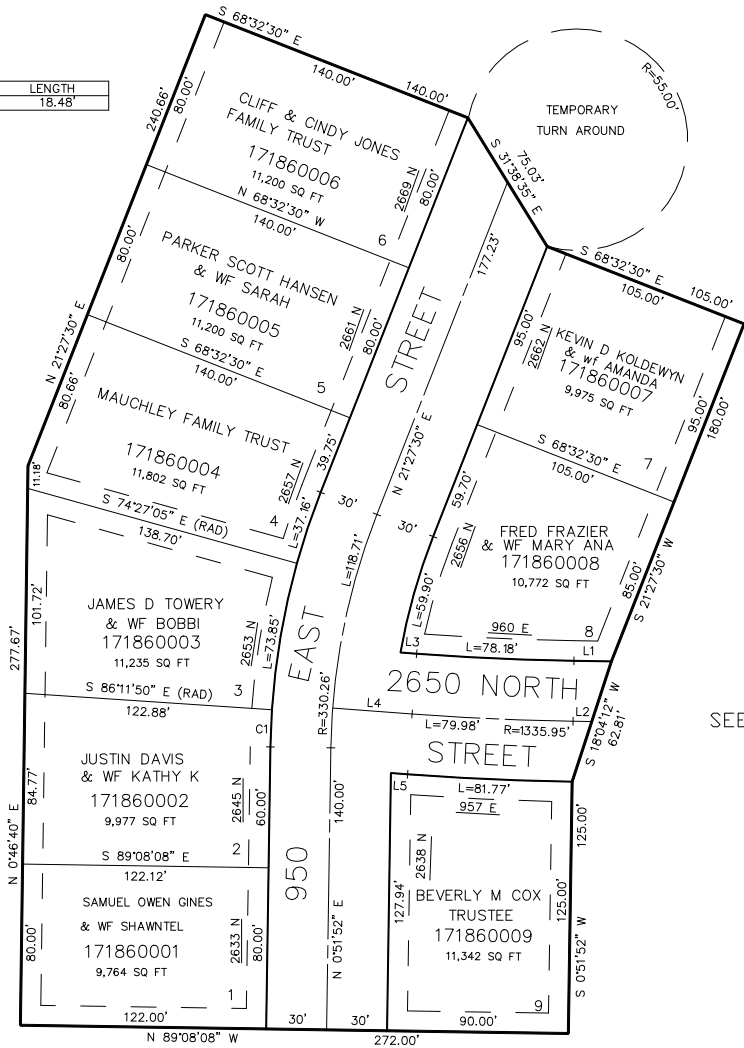
LINE DATA

LINE	DIRECTION	DISTANCE
L1	N 89°08'08" W	18.58'
L2	S 89°08'08" E	9.29'
L3	N 85°42'20" W	8.05'
L4	S 85°42'20" E	39.55'
L5	S 85°42'20" E	8.29'

CURVE DATA

LOT	CURVE	RADIUS	LENGTH
2	C1	360.26'	18.48'

SEE PAGE 18



SEE PAGE 18

SEE PAGE 18

FOR COMPLETE ENG DATA SEE
ORIGINAL DEDICATION PLAT IN
BOOK 36, PAGE 18 OF RECORDS.

FOR TAX PURPOSES ONLY