

PART OF SEC. 32 & 33, T.7N., R.1W., S.L.B. & M.
SCOTTSDALE ESTATES P.R.U.D.

197

IN NORTH OGDEN CITY

TAXING UNIT: 10

SCALE 1" = 50'

SEE PAGE 198

500 EAST STREET
(Private Street)

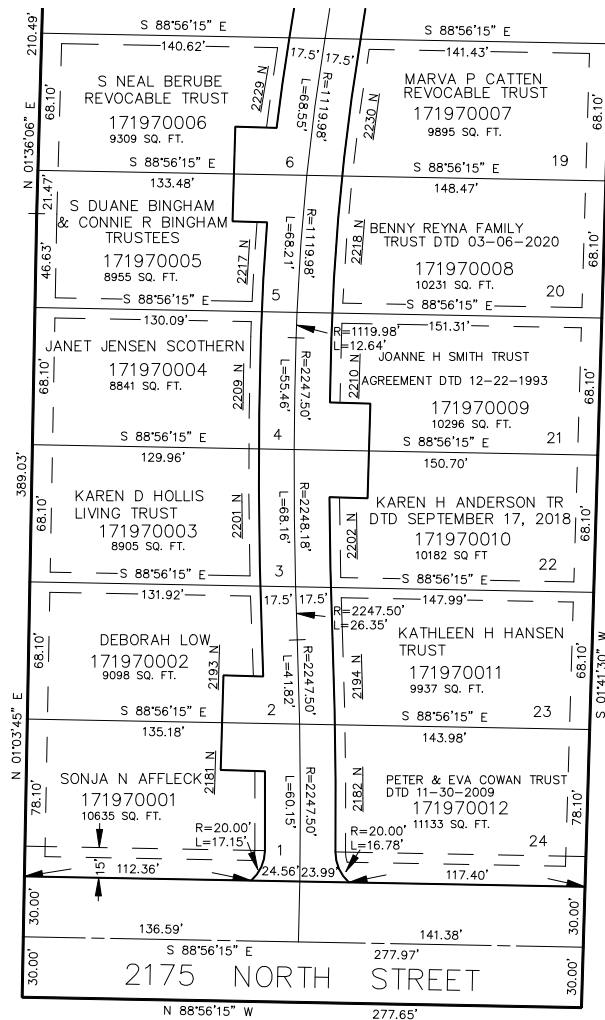
SEE PAGE 69

SEE PAGE 70

SEE PAGE 76-1

ALL PROPERTY LINES ARE MEASURED
TO THE STREET CENTER EXCEPT AS
OTHERWISE SHOWN.

10' UTILITY & DRAINAGE EASEMENTS EACH
SIDE OF PROPERTY LINES AS INDICATED
BY DASHED LINES EXCEPT AS OTHERWISE
SHOWN.



SEE PAGE 76-1

FOR COMPLETE ENG DATA SEE
ORIGINAL DEDICATION PLAT IN
BOOK 39, PAGE 2 OF RECORDS.

FOR TAX PURPOSES ONLY

JPS 11-94