

PART OF THE N.E. 1/4, SEC. 28, T.7N., R.1W., S.L.B. & M.
FRANCIS W. STOKES SUBDIVISION – PHASE 1
AMENDED

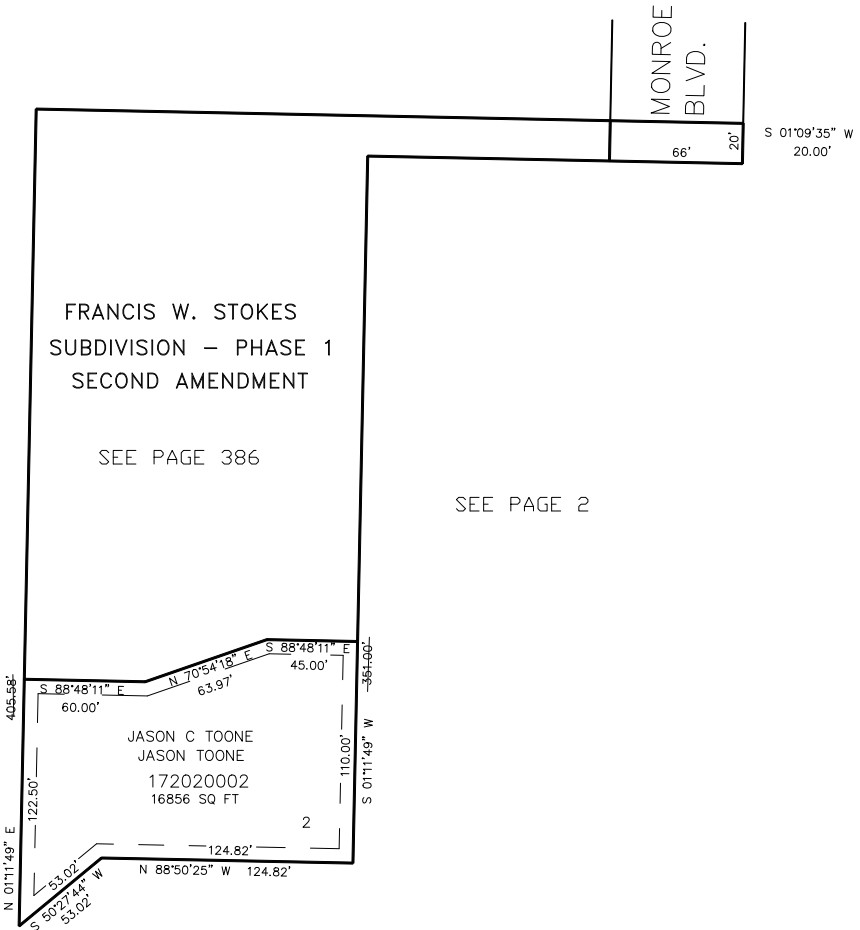
TAXING UNIT: 10

IN NORTH OGDEN CITY
SCALE 1" = 50'

SEE PAGE 2

SEE PAGE 26

SEE PAGE 2



SEE PAGE 2

7' UTILITY & DRAINAGE EASEMENTS EACH
SIDE OF PROPERTY LINES AS INDICATED
BY DASHED LINES EXCEPT AS OTHERWISE
SHOWN.

FOR COMPLETE ENG DATA SEE
ORIGINAL DEDICATION PLAT IN
BOOK 39, PAGE 74 OF RECORDS.

FOR AMENDED DED. PLAT SEE
BOOK 41, PAGE 7 OF RECORDS.

FOR TAX PURPOSES ONLY