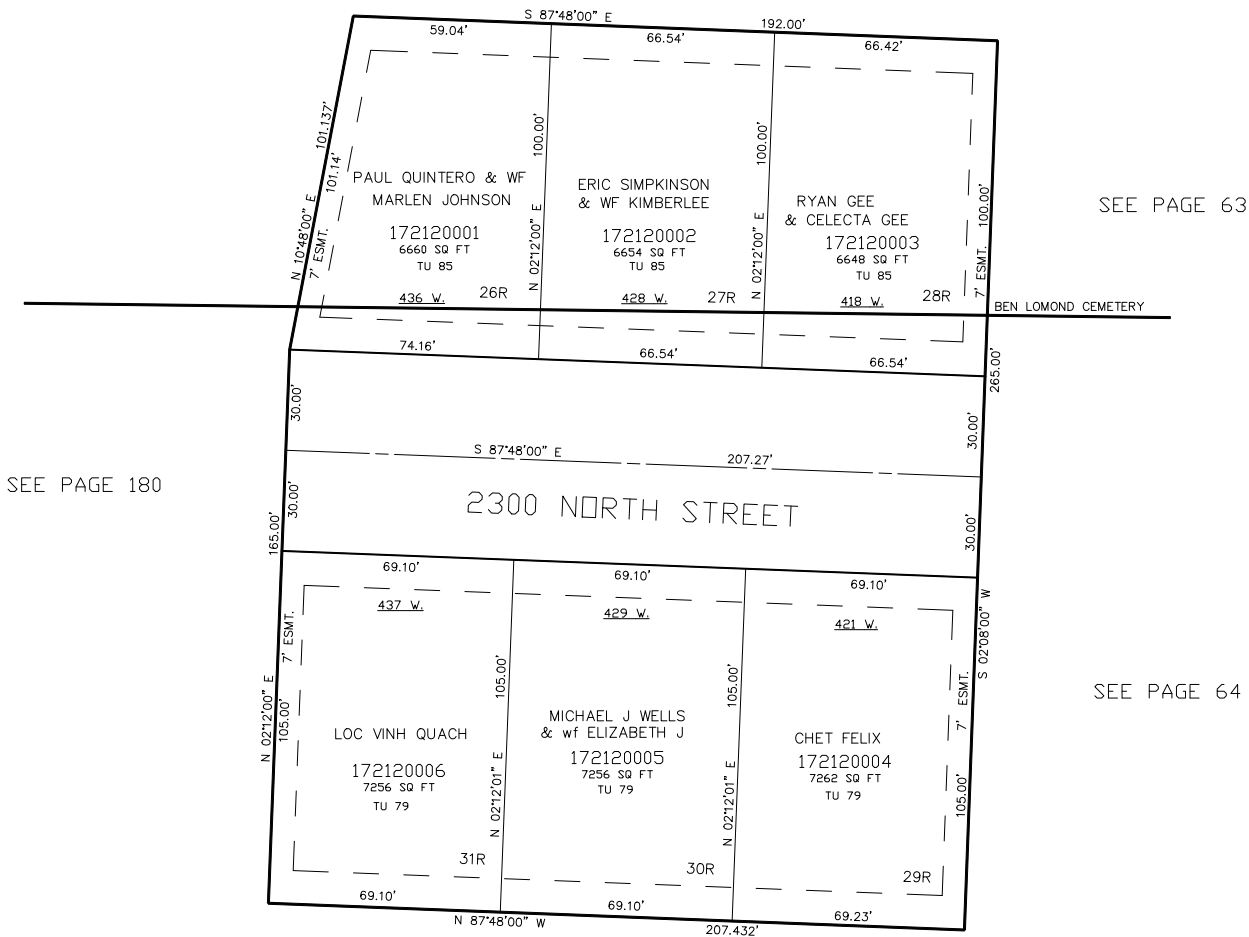


PART OF THE E. 1/2, OF SECTION 31, T.7N., R.1W., S.L.B. & M.
PARADISE RANCH SUBDIVISION, PHASE 2

IN HARRISVILLE CITY
SCALE 1" = 30'

TAXING UNIT: 12, 20

SEE PAGE 180



SEE PAGE 180

SEE PAGE 63

SEE PAGE 64

SEE PAGE 64

FOR COMPLETE ENG DATA SEE
ORIGINAL DEDICATION PLAT IN
BOOK 43, PAGE 97 OF RECORDS.

NOTE: ALL LOTS WITH AN "R"
ARE RESTRICTED TO HOMES
WITHOUT BASEMENT STRUCTURES.

10' UTILITY & DRAINAGE EASEMENTS EACH
SIDE OF PROPERTY LINES AS INDICATED
BY DASHED LINES EXCEPT AS OTHERWISE
SHOWN.

FOR TAX PURPOSES ONLY