

PART OF THE N.1/2, OF SECTION 5, T.6N., R.1W., AND A
PART OF THE S.1/2, OF SECTION 32, T.7N., R.1W., S.L.B. & M.

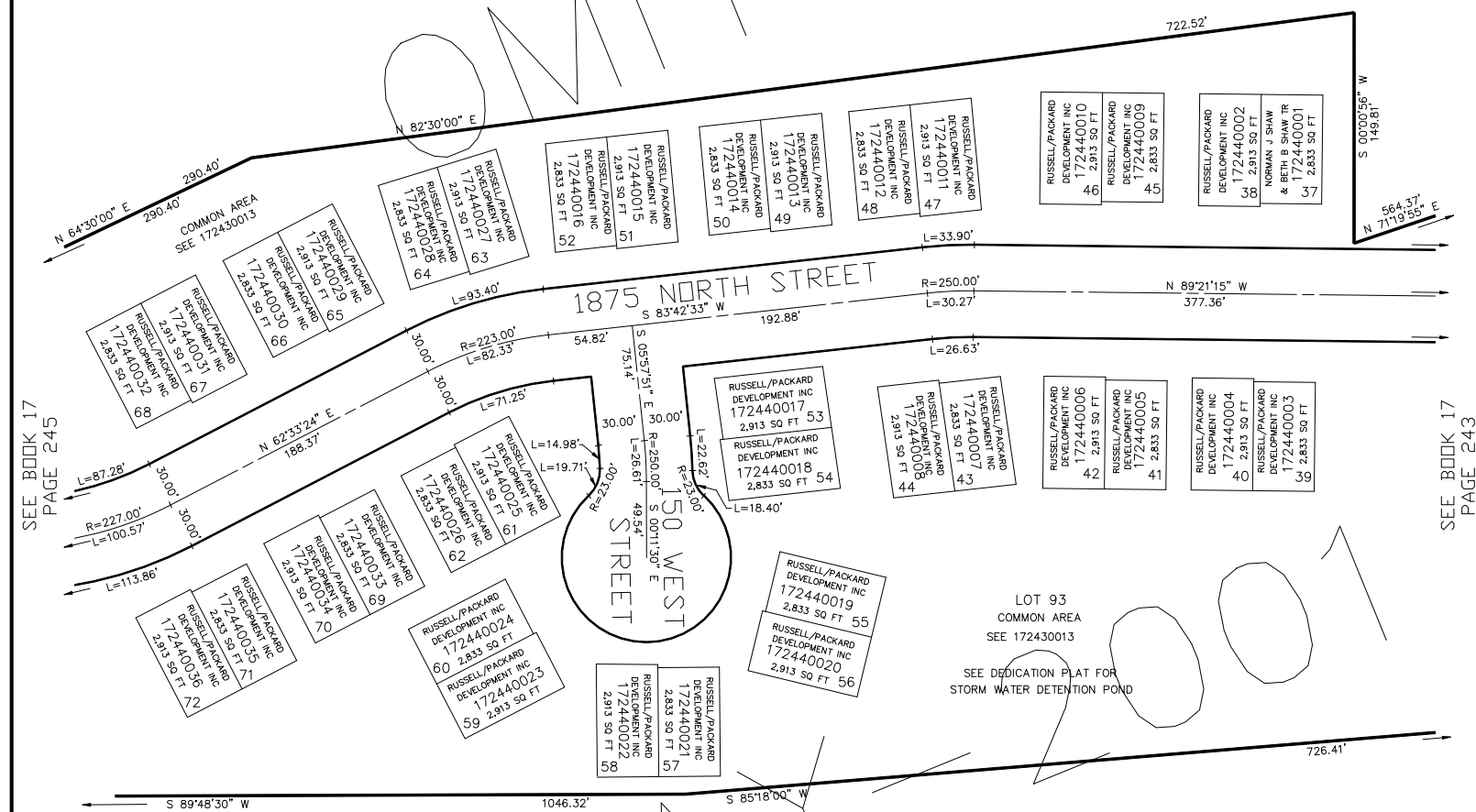
ROYLANCE FARMS P.R.U.D. PHASE II AMENDMENT #1

TAXING UNIT: 332

IN NORTH OGDEN CITY

SCALE 1" = 60'

SEE BOOK 17
PAGE 68



SEE BOOK 17
PAGE 243

SEE BOOK 17
PAGE 68

FOR LOT PERIMETER INFORMATION
SEE DEDICATION PLAT.

FOR COMPLETE ENG DATA SEE
ORIGINAL DEDICATION PLAT IN
BOOK 52, PAGE 37 OF RECORDS.

FOR TAX PURPOSES ONLY

CRR 12-99