

PART OF THE N.1/2, OF SECTION 5, T.6N., R.1W., AND A  
PART OF THE S.1/2, OF SECTION 32, T.7N., R.1W., S.L.B. & M.

# ROYLANCE FARMS P.R.U.D. PHASE II AMENDMENT #1

TAXING UNIT: 332 & 333

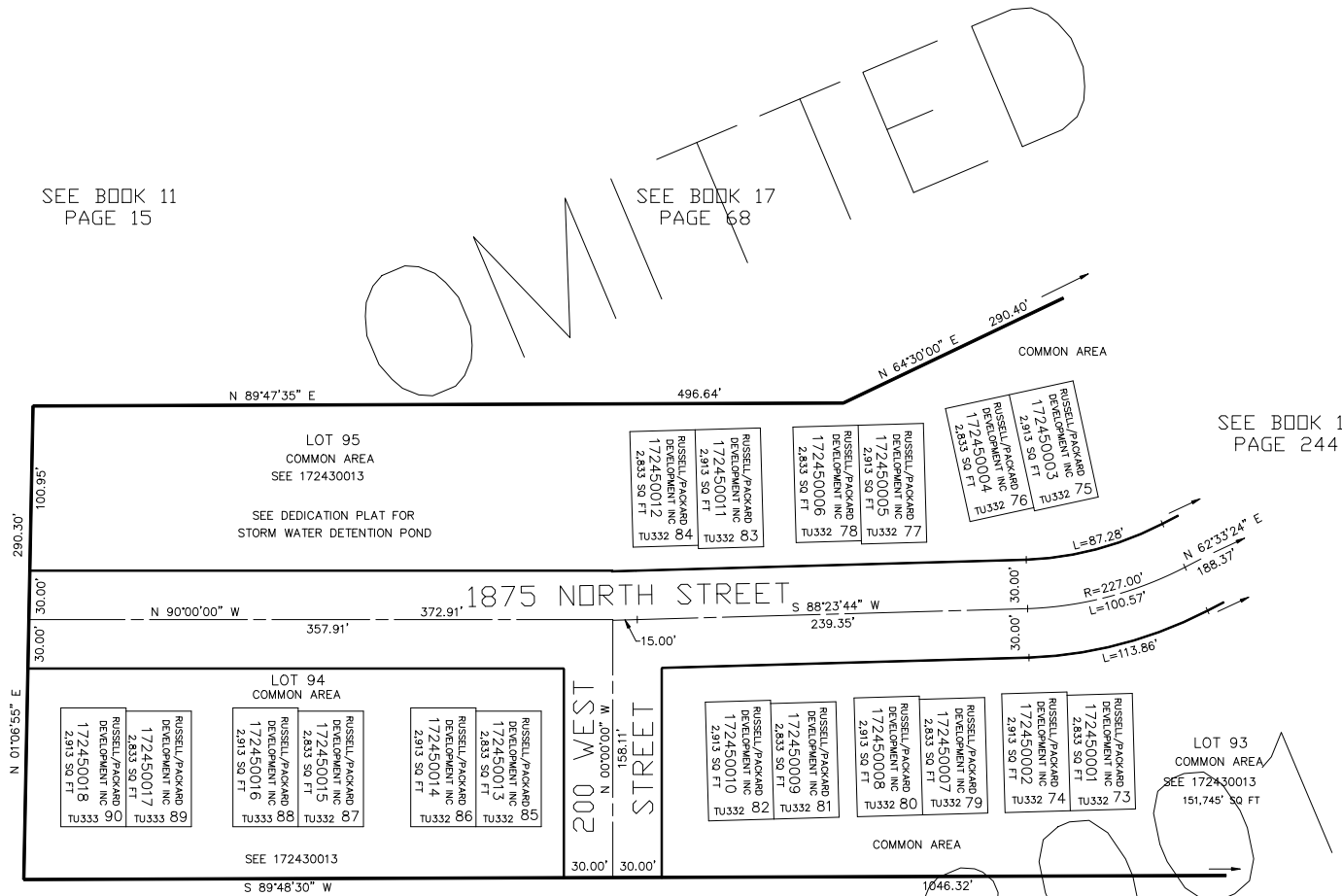
IN NORTH OGDEN CITY

SCALE 1" = 60'

SEE BOOK 11  
PAGE 15

SEE BOOK 17  
PAGE 68

SEE BOOK 17  
PAGE 244



SEE BOOK 11  
PAGE 15

SEE BOOK 17  
PAGE 68

FOR LOT PERIMETER INFORMATION  
SEE DEDICATION PLAT.

FOR COMPLETE ENG DATA SEE  
ORIGINAL DEDICATION PLAT IN  
BOOK 52, PAGE 37 OF RECORDS.

\*FOR TAX PURPOSES ONLY\*