

PART OF THE SE.1\4, OF SECTION 33, T.7N., R.1W., S.L.B. & M.
FERN-WOOD ESTATES NO. 1

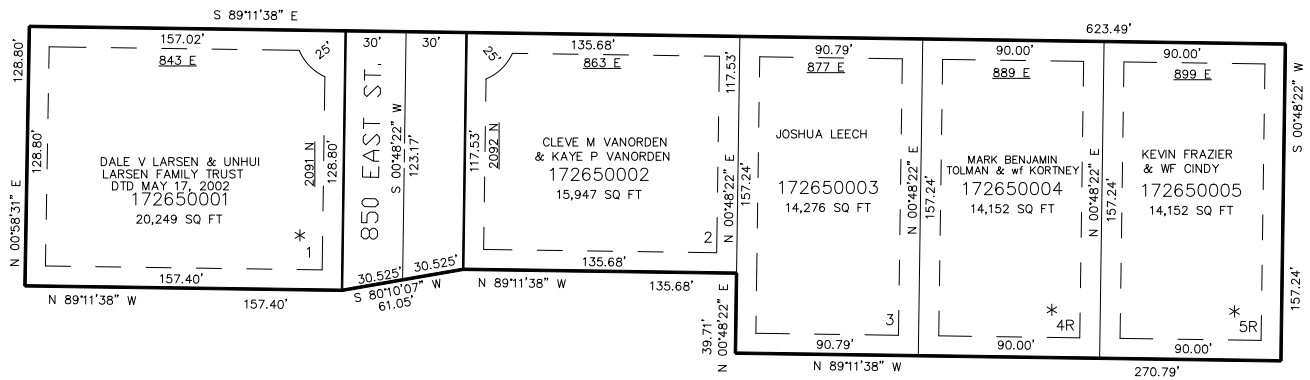
265

TAXING UNIT: 10

IN NORTH OGDEN CITY
 SCALE 1" = 50'

SEE PAGE 75

2100 NORTH ST.



SEE PAGE 75

10' UTILITY & DRAINAGE EASEMENTS EACH
 SIDE OF PROPERTY LINES AS INDICATED
 BY DASHED LINES EXCEPT AS OTHERWISE
 SHOWN.

FOR COMPLETE ENG DATA SEE
 ORIGINAL DEDICATION PLAT IN
 BOOK 54, PAGE 52 OF RECORDS.

* SEE DEDICATION PLAT FOR WETLAND INFORMATION

FOR TAX PURPOSES ONLY