

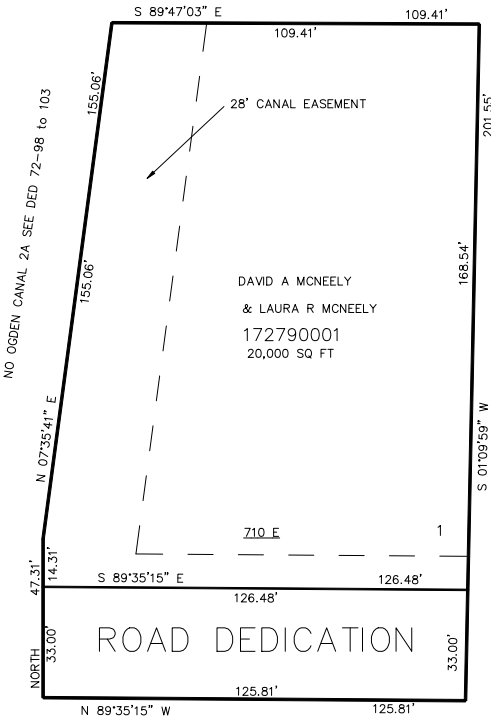
PART OF THE SW.1/4, OF SECTION 33, T.7N., R.1W., S.L.B. & M.
RIGGS-RANDALL SUBDIVISION

IN NORTH OGDEN CITY
SCALE 1" = 30'

TAXING UNIT: 10

SEE PAGE 76

SEE PAGE 76



SEE PAGE 76

2100 NORTH STREET

SEE PAGE 76

10' UTILITY & DRAINAGE EASEMENTS EACH
SIDE OF PROPERTY LINES AS INDICATED
BY DASHED LINES EXCEPT AS OTHERWISE
SHOWN.

FOR COMPLETE ENG DATA SEE
ORIGINAL DEDICATION PLAT IN
BOOK 56, PAGE 62 OF RECORDS.

FOR TAX PURPOSES ONLY