

PART OF THE SE.1/4, OF SECTION 28, T.7N., R.1W, S.L.B. & M.

PARKINSON PLACE SUB

IN NORTH OGDEN CITY

SCALE 1" = 50'

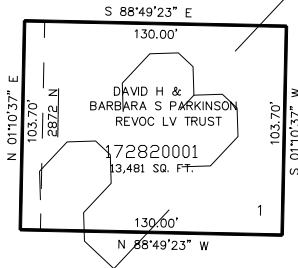
TAXING UNIT: 10

282

SEE PAGE 11

SEE PAGE 11

750 EAST ST.



SEE PAGE 11

SEE PAGE 11

FOR COMPLETE ENG DATA SEE
ORIGINAL DEDICATION PLAT IN
BOOK 57, PAGE 94 OF RECORDS.

10' UTILITY & DRAINAGE EASEMENTS EACH
SIDE OF PROPERTY LINES AS INDICATED
BY DASHED LINES EXCEPT AS OTHERWISE
SHOWN.