

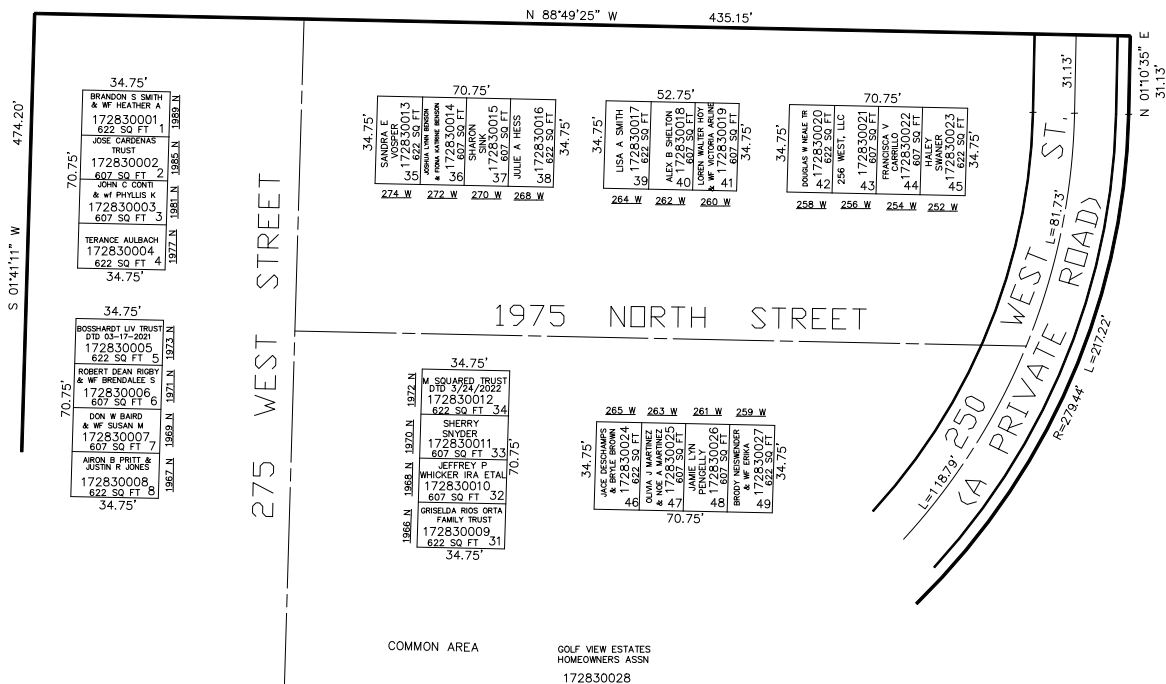
PART OF THE S.W. 1/4 OF SECTION 32, T.7N., R.1W., S.L.B. & M.
GOLF VIEW ESTATES SUBDIVISION PHASE-1 PRUD AMENDED

TAXING UNIT: 12

IN HARRISVILLE CITY
SCALE 1" = 40'

SEE PAGE 71

2000 NORTH ST



SEE PAGE 284

FOR COMPLETE ENG DATA SEE
ORIGINAL DEDICATION PLAT IN
BOOK 58, PAGE 28 OF RECORDS.