

PART OF THE NE, NW, SE, & SW 1/4 OF SECTION 30, T.7N., R.1W., S.L.B. & M.
MOUNTAIN VINEYARD ESTATES ON. 2

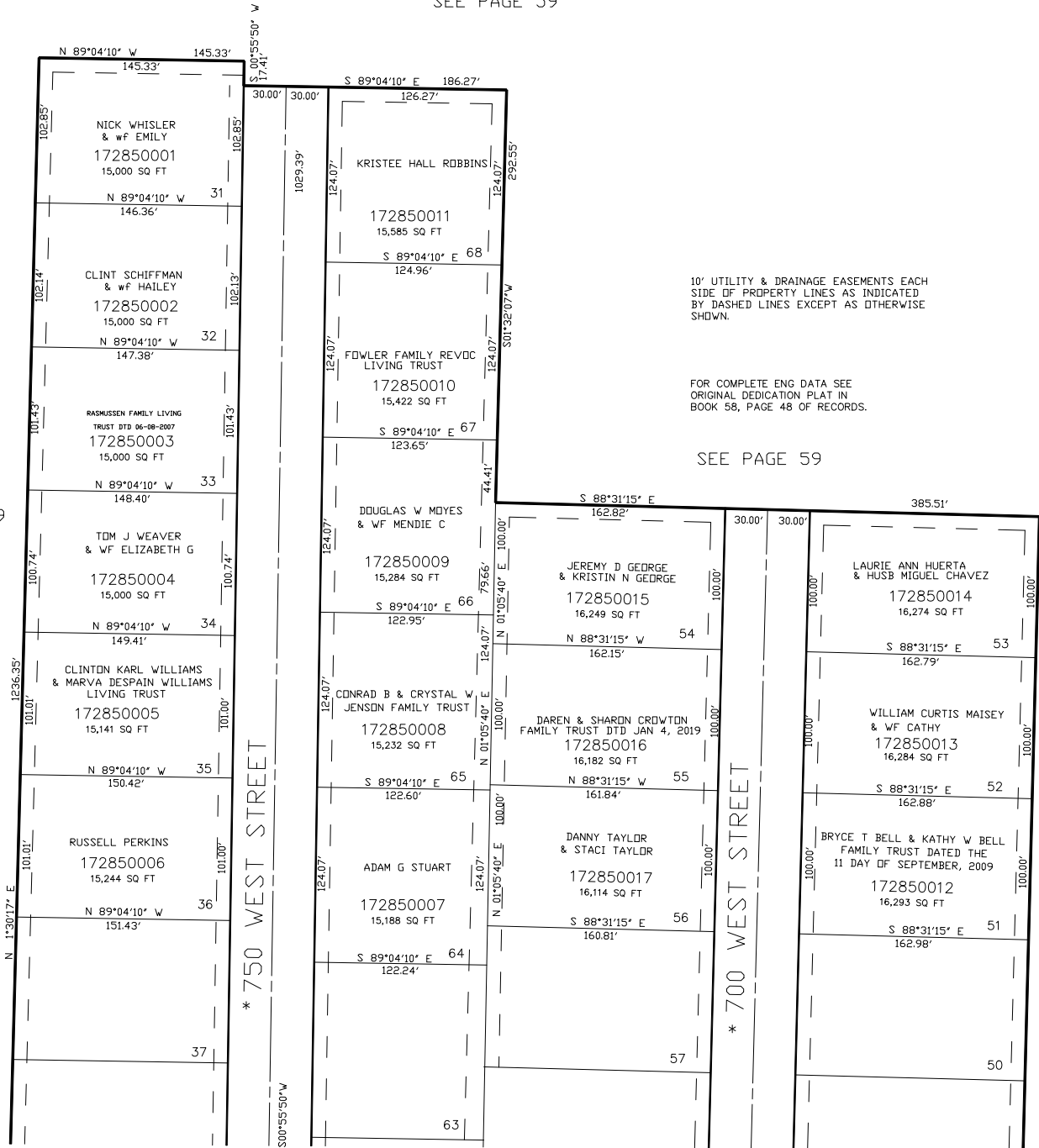
LOTS 31 TO 36, 51 TO 56, AND 64 TO 68

TAXING UNIT: 11

IN PLEASANT VIEW CITY

SCALE 1" = 60'

SEE PAGE 59



SEE PAGE 59