

PART OF THE NE, NW, SE, & SW 1/4 OF SECTION 30, T.7N., R.1W., S.L.B. & M.

MOUNTAIN VINEYARD ESTATES ON. 2

LOTS 37 TO 50, AND LOTS 57 TO 63

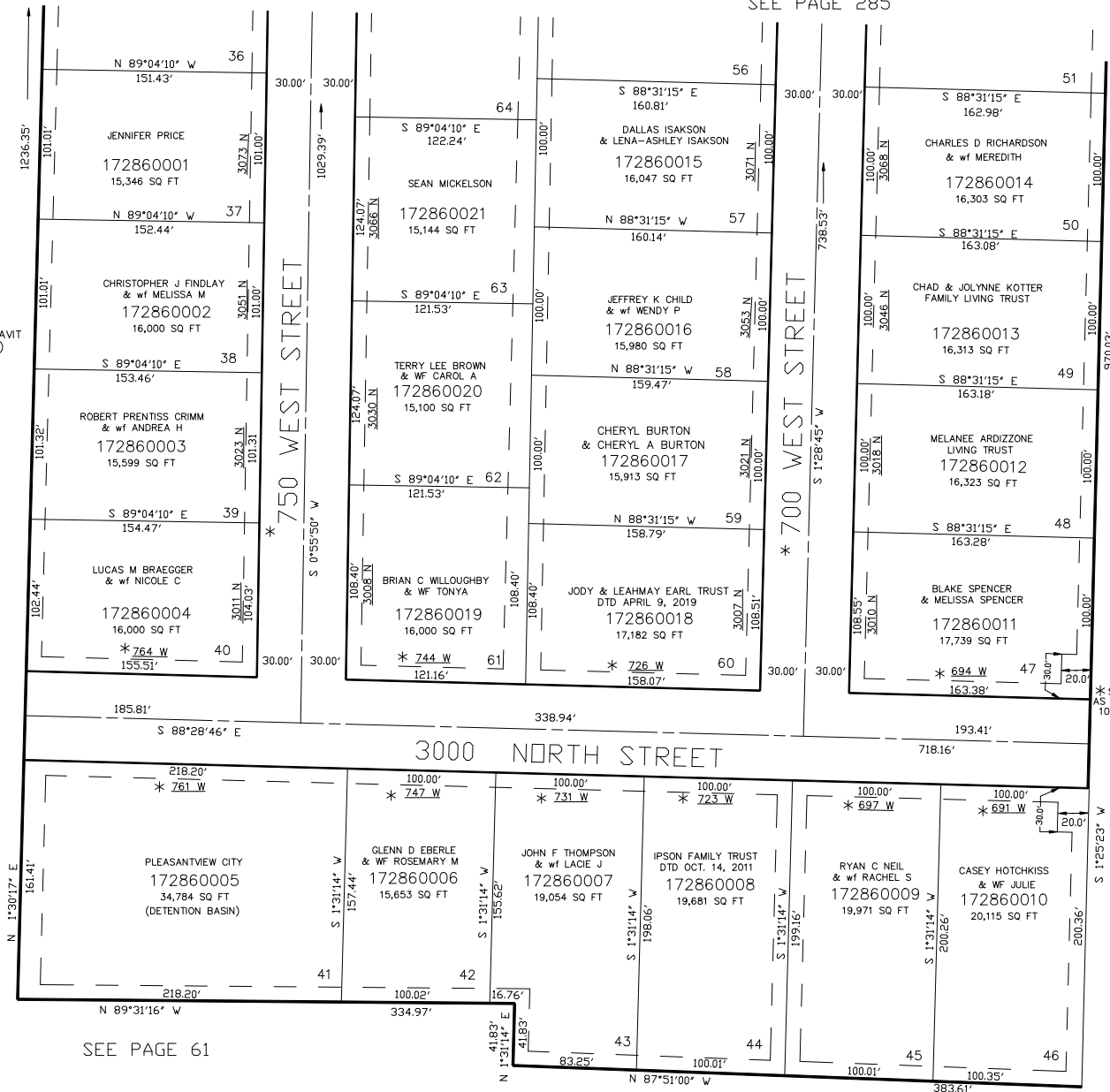
TAXING UNIT: 11

IN PLEASANT VIEW CITY

SCALE 1" = 60'

SEE PAGE 285

SEE PAGE 285



10' UTILITY & DRAINAGE EASEMENTS EACH
SIDE OF PROPERTY LINES AS INDICATED
BY DASHED LINES EXCEPT AS OTHERWISE
SHOWN.

FOR COMPLETE ENG DATA SEE
ORIGINAL DEDICATION PLAT IN
BOOK 58, PAGE 48 OF RECORDS.

FOR TAX PURPOSES ONLY