

PART OF THE NW 1/4, OF SECTION 32, T.7N., R.1W., S.L.B. & M.
THE COTTAGES AT COLONIAL SPRINGS S.A.P. AMENDED

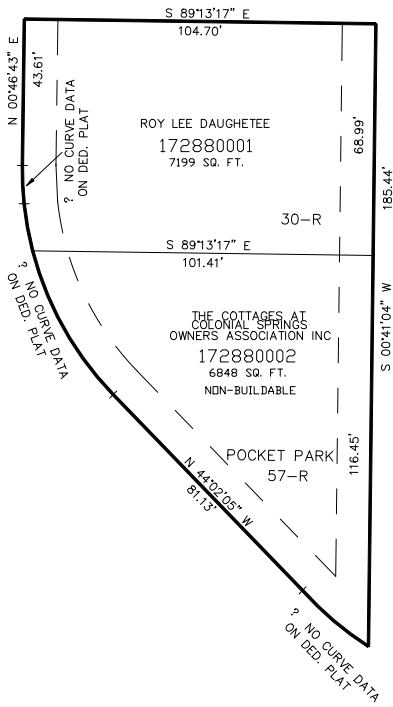
IN HARRISVILLE CITY
SCALE 1" = 30'

TAXING UNIT: 12

SEE PAGE 264

DORCHESTER AVE.

SEE PAGE 281



SEE PAGE 264

10' UTILITY & DRAINAGE EASEMENTS EACH
SIDE OF PROPERTY LINES AS INDICATED
BY DASHED LINES EXCEPT AS OTHERWISE
SHOWN.

FOR COMPLETE ENG DATA SEE
ORIGINAL DEDICATION PLAT IN
BOOK 58, PAGE 76 OF RECORDS.