

PART OF THE SE.1/4, OF SECTION 31 AND PART OF THE SW.1/4, OF SECTION 32, T.7N., R.1W., S.L.B. & M.
GOLFCREST VILLAGE TOWNHOMES SUBDIVISION PHASE 2

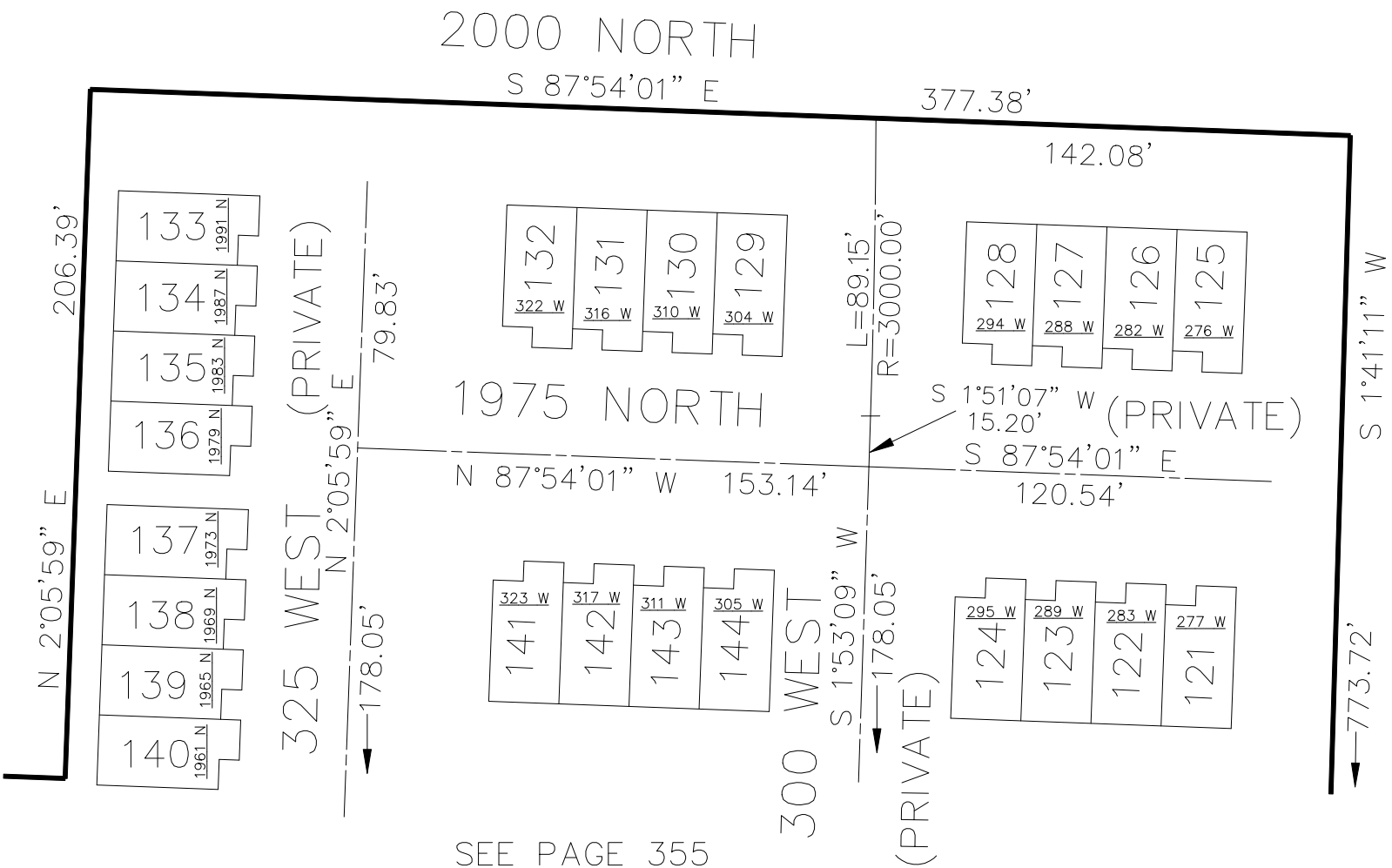
TAXING UNIT: 12

IN HARRISVILLE CITY
SCALE 1" = 50'

SEE PAGE 71

SEE PAGE 71

SEE PAGE 71



10' UTILITY & DRAINAGE EASEMENTS EACH
SIDE OF PROPERTY LINES AS INDICATED
BY DASHED LINES EXCEPT AS OTHERWISE
SHOWN.

SEE PAGE 355

FOR COMPLETE ENG DATA SEE
ORIGINAL DEDICATION PLAT IN
BOOK 69, PAGE 47 OF RECORDS.

UNIT	SERIAL	OWNERSHIP	UNIT	SERIAL	OWNERSHIP
121	173540001	JACLYN MCHALE	133	173540013	LINDSEY WINEGAR
122	173540002	DARIUS A BEARD & WF RAQUEL A	134	173540014	MARCELO JUAREZ
123	173540003	289 PROPERTIES LLC	135	173540015	289 PROPERTIES LLC
124	173540004	SHEILA A PAULSON	136	173540016	LYNN M RAY JR & WF VICKI A
125	173540005	JAELYN SIRRIE	137	173540017	SAJACO, LLC
126	173540006	MEGAN BROWN ETAL	138	173540018	SAJACO, LLC
127	173540007	ANTHONY JAMES WEITZEIL & wf NIKKI R	139	173540019	SAJACO, LLC
128	173540008	C & A INVSTMNT MGMNT LLC	140	173540020	SAJACO, LLC
129	173540009	ROBIN SMITH	141	173540021	JARED GAREY & EMILY GAREY
130	173540010	ROBERT L VANDERWOOD & WF LORRAINE	142	173540022	JIMMY JAVIER
131	173540011	KENNETH VINCENT TOLBERT	143	173540023	BLAKE GOODWIN
132	173540012	GORDON & PATRICIA ASHLEY 2006 REVOC TR	144	173540024	JADE HARMON
			C.A.	SEE 173560021	