

PART OF THE NW.1/4, OF SECTION 29, T.7N., R.1W., S.L.B. & M.

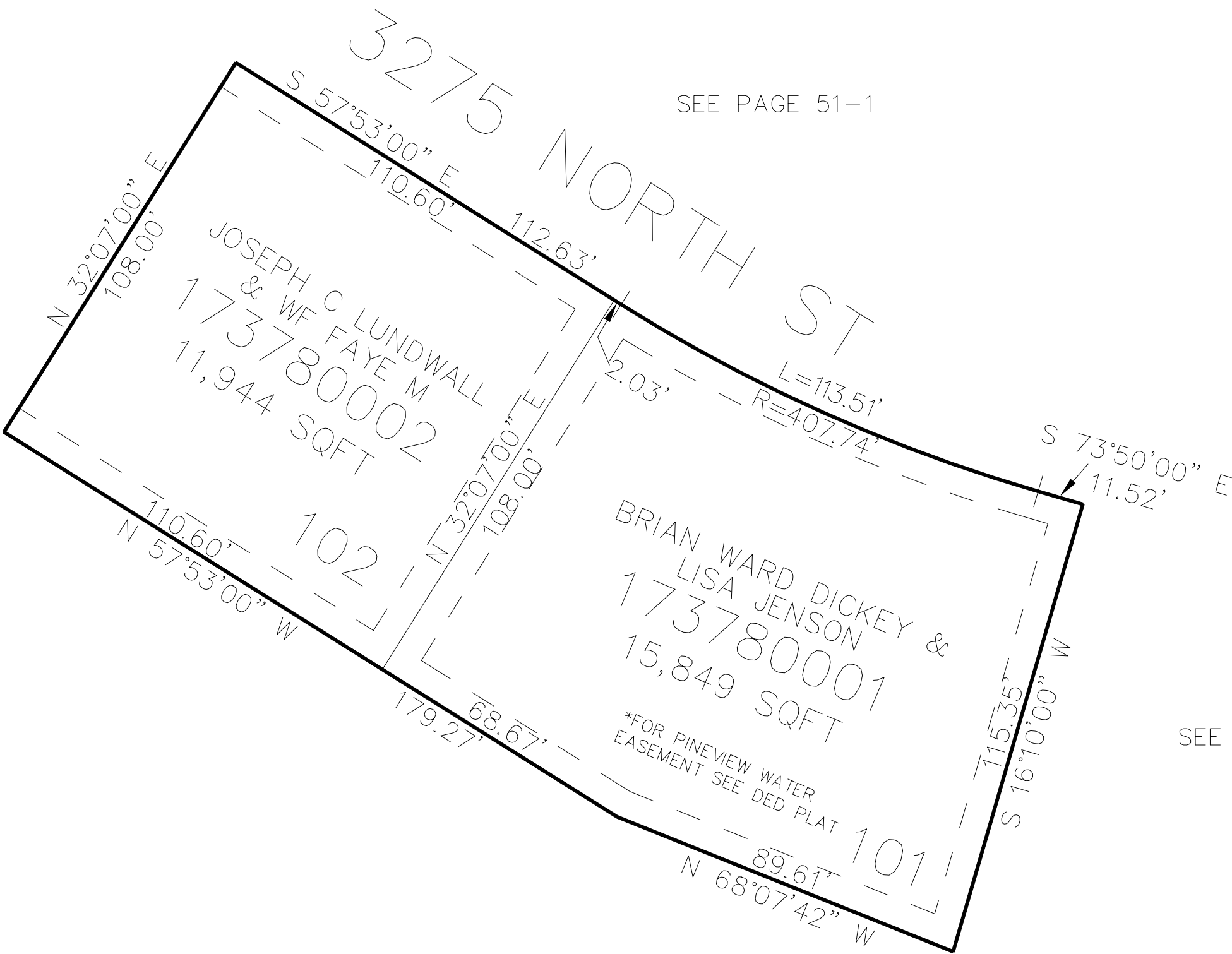
378

PINEWOOD MOUNTAIN SUBDIVISION

IN NORTH OGDEN CITY

TAXING UNIT: 10

SCALE 1" = 30'



SEE PAGE 51-1

SEE BK 16 PG 79

SEE PAGE 160

SEE BK 16 PG 79

7' UTILITY & DRAINAGE EASEMENTS EACH  
SIDE OF PROPERTY LINES AS INDICATED  
BY DASHED LINES EXCEPT AS OTHERWISE  
SHOWN.

FOR COMPLETE ENG DATA SEE  
ORIGINAL DEDICATION PLAT IN  
BOOK 75, PAGE 59 OF RECORDS.