

PART OF SECTION 29, T.6N., R.1W., S.L.B. & M.
PHEASANT LANDING 2ND AMENDMENT

IN NORTH OGDEN CITY
SCALE 1" = 30'

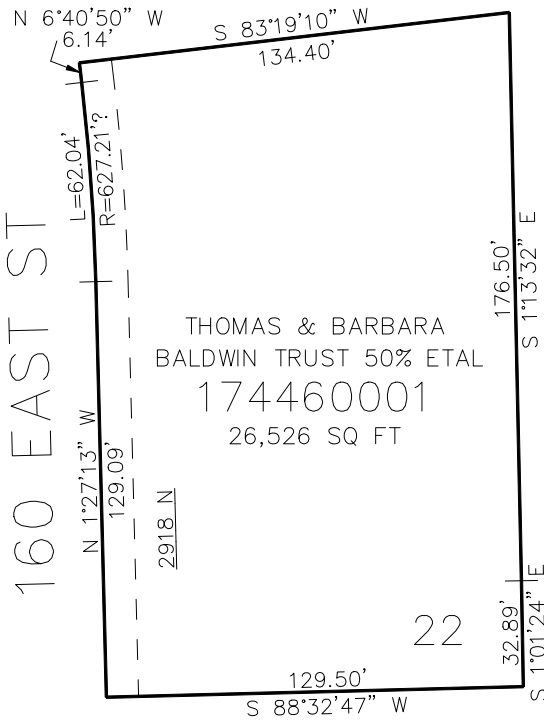
TAXING UNIT: 10

SEE PAGE 424

SEE PAGE 424

SEE PAGE 424

SEE PAGE 424



10' UTILITY & DRAINAGE EASEMENTS EACH
SIDE OF PROPERTY LINES AS INDICATED
BY DASHED LINES EXCEPT AS OTHERWISE
SHOWN.

FOR COMPLETE SURVEY DATA SEE
ORIGINAL DEDICATION PLAT IN
BOOK 92, PAGE 83 OF RECORDS.