

PART OF THE N.E. 1/4, OF SECTION 32, T.7N., R.1W., S.L.B. & M.

106

A. BROWN SUBDIVISION

IN NORTH OGDEN CITY

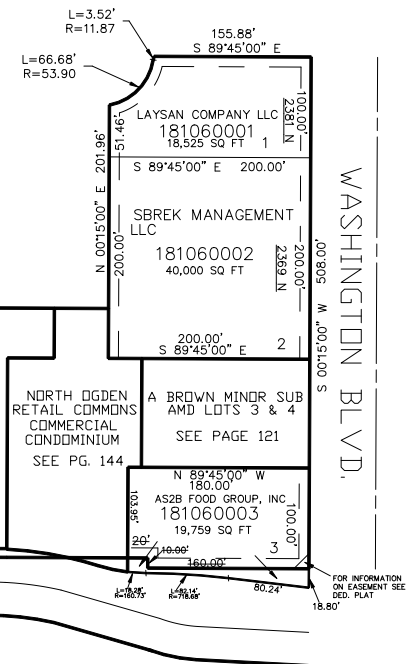
TAXING UNIT: 273

SCALE 1" = 100'

SEE PAGE 56

SEE PAGE 105

BROWNS FARM TOWNHOUSES PRUD
SEE PAGE 120



SEE PAGE 82

FOR COMPLETE ENG DATA SEE
ORIGINAL DEDICATION PLAT IN
BOOK 53, PAGE 42 OF RECORDS.

10' UTILITY & DRAINAGE EASEMENTS EACH
SIDE OF PROPERTY LINES AS INDICATED
BY DASHED LINES EXCEPT AS OTHERWISE
SHOWN.

FOR TAX PURPOSES ONLY

JC 1-01